

HEPATITIS A OUTBREAK SAN DIEGO COUNTY



Sayone Thihalolipavan, MD, MPH
Deputy Public Health Officer
Public Health Services
County of San Diego Health and Human Services Agency

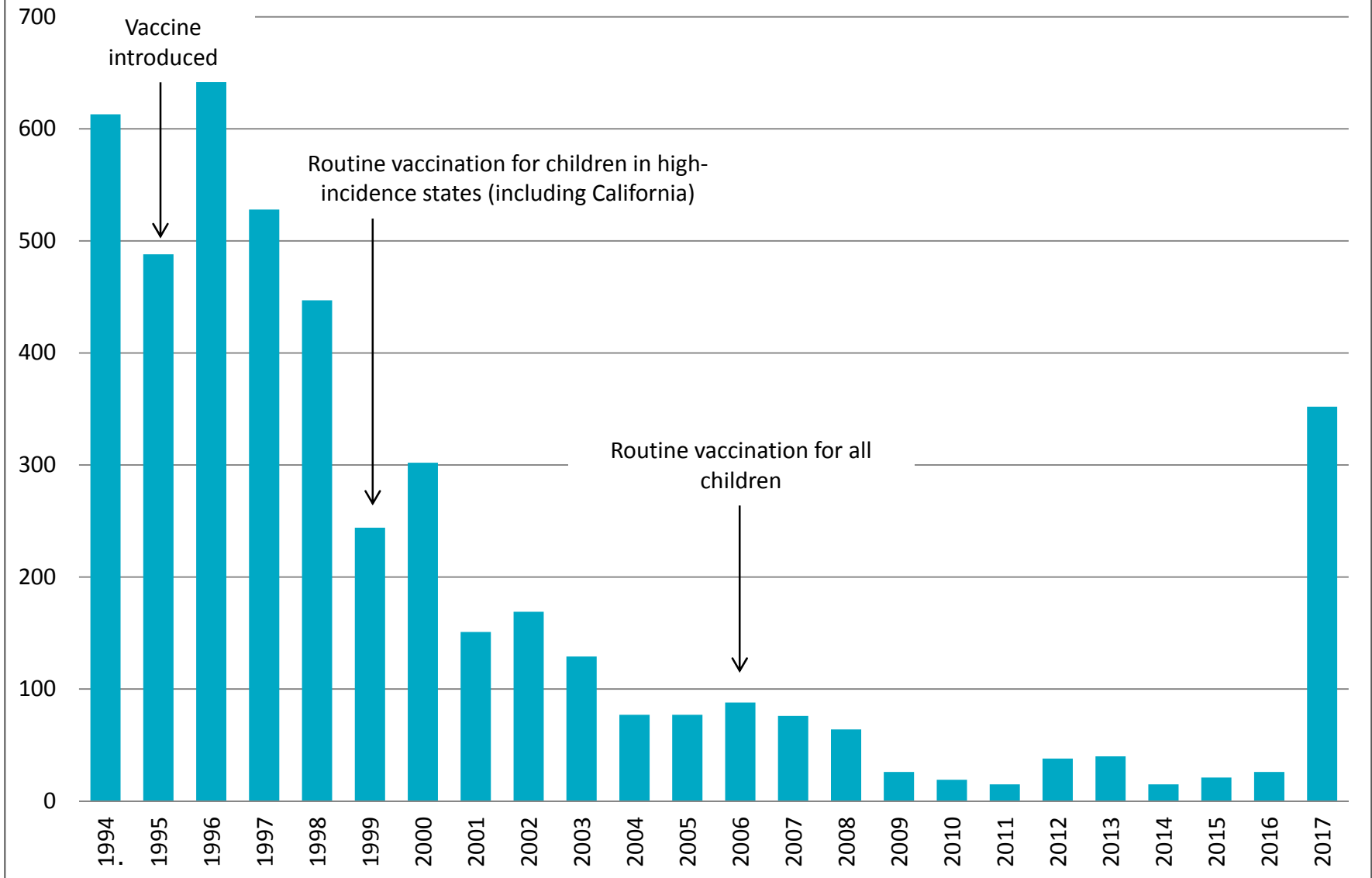
Regional Task Force on Homelessness

August 17, 2017



Image: CDC

Hepatitis A Cases, San Diego County 1994 - 2017



HEPATITIS A OVERVIEW



LIVE WELL
SAN DIEGO

Hepatitis A can easily spread from person-to-person

Can cause liver disease lasting a few weeks to a serious illness lasting several months

Can cause death in some cases



HEPATITIS A OVERVIEW



 LIVE WELL
SAN DIEGO

**Average incubation period for HAV is 28 days
(range: 15–50 days)**

**HAV can live outside the body for months, depending
on the environmental conditions**

**HAV is killed by heating to >185 degrees (>85 degrees
C) for one minute**

**Adequate chlorination of water kills HAV that enters
the water supply**

**Vaccination with the full, two-dose series of HAV
vaccine is the best way to prevent infection**

HOW DOES IT SPREAD?



**LIVE WELL
SAN DIEGO**

***Ingestion of fecal matter,
even in microscopic amounts, from:***

**Touching objects
or eating food that
someone with a
Hep A infection
handled**

**Close person-to-
person contact
with an infected
person**

**Use of recreational
drugs, whether
injected or not**

**Sexual contact
with someone who
has a Hep A
infection**

HEPATITIS A OUTBREAKS, UNITED STATES 1995 - PRESENT



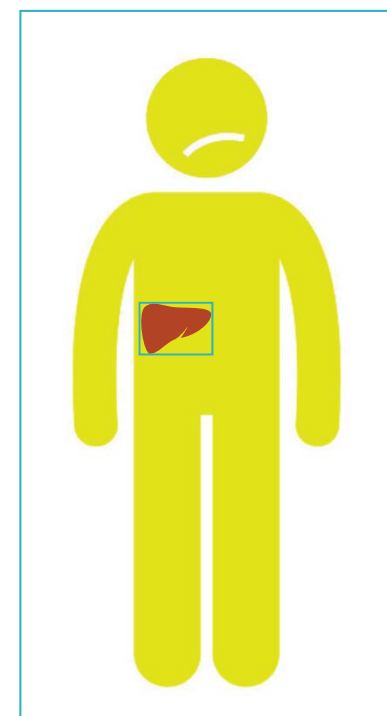
YEAR	LOCATION	METHOD OF SPREAD/SOURCE	#CASES	#HOSPITALIZATIONS	#DEATHS
2003	PA & OH	Food (Green Onions)	660	Unknown	3 (0.5%)
2016-17	SAN DIEGO	Close Person to Person Contact	333	232 (70%)	11 (3.3%)
2016	HAWAII	Food (Raw Scallops)	292	74 (25%)	0
2016-17	MICHIGAN	Close Person to Person Contact	190 (last public update)	Unknown (87%)	10 (5.2%)
2013	10 states	Food (Pomegranate Seeds)	165	71 (43%)	0

HEPATITIS A, SAN DIEGO



LIVE WELL
SAN DIEGO

- **333 confirmed outbreak cases from 11/22/16 thru 8/8/17**
 - **232 (70%) hospitalizations, 11 (3%) deaths**
 - **227 (68%) male (2 MSM), 106 (32%) female**
 - **Age range 20-87 (median 44)**
- **Suspected Exposure Type**
 - **131 (39%) homeless and illicit drug use**
 - **53 (16%) homeless only**
 - **36 (11%) illicit drug use only**
 - **76 (23%) neither**
 - **37 (11%) unknown**

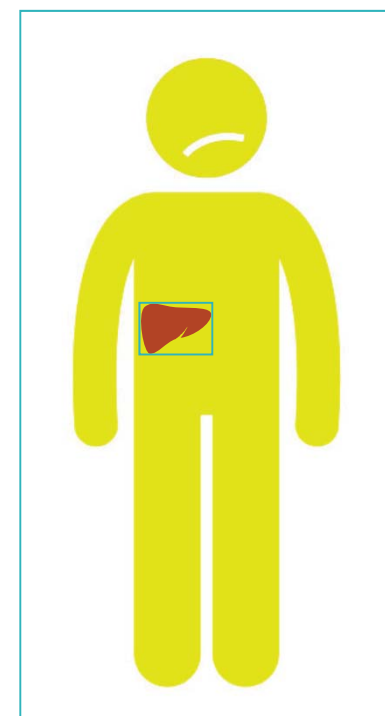


HEPATITIS A, SAN DIEGO



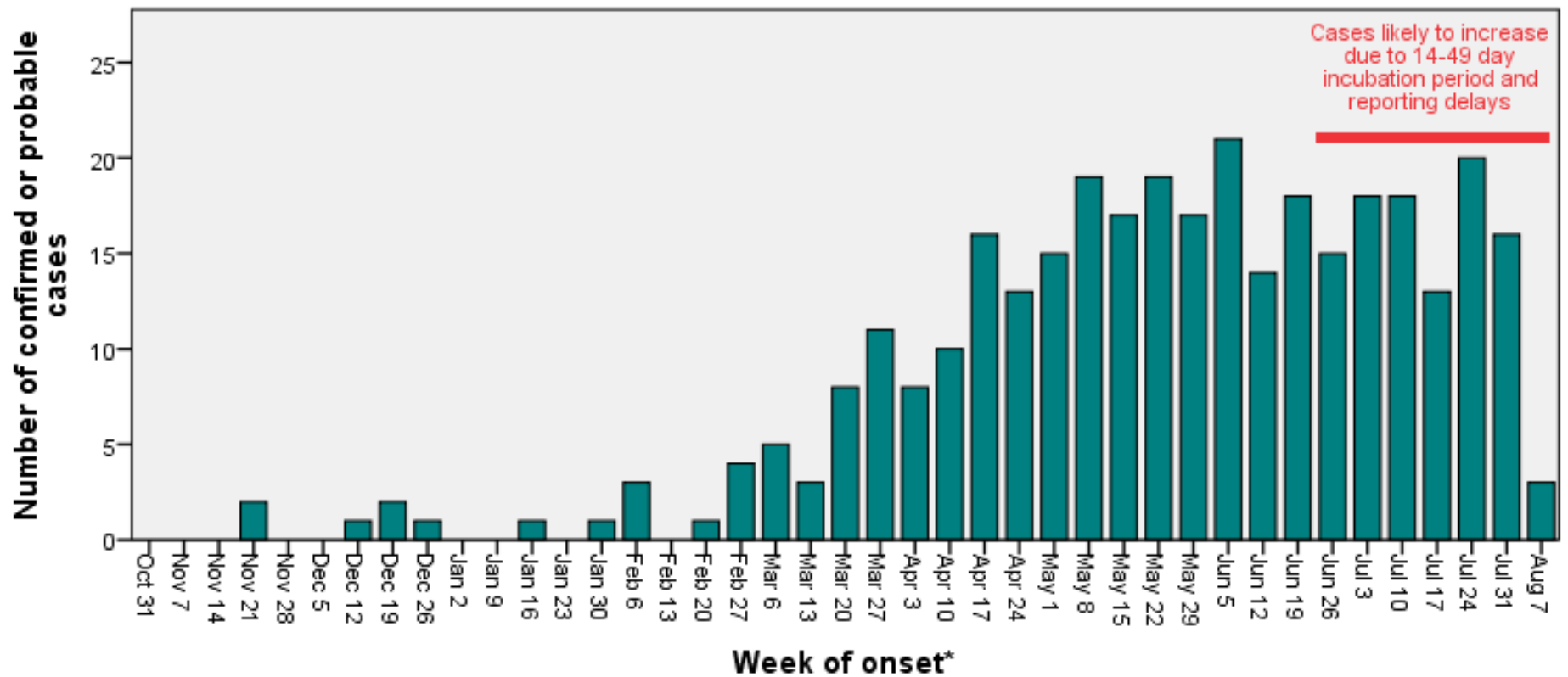
LIVE WELL
SAN DIEGO

- **Other Liver Diseases**
 - 58/262 (22.1%) with hepatitis C
 - 15/261 (5.7%) with hepatitis B
- **Not included in outbreak count – 19 travel-related cases**
- **37 cases under investigation**
- **Epi & viral sequence linked cases in other CA counties, UT, AZ, CO**

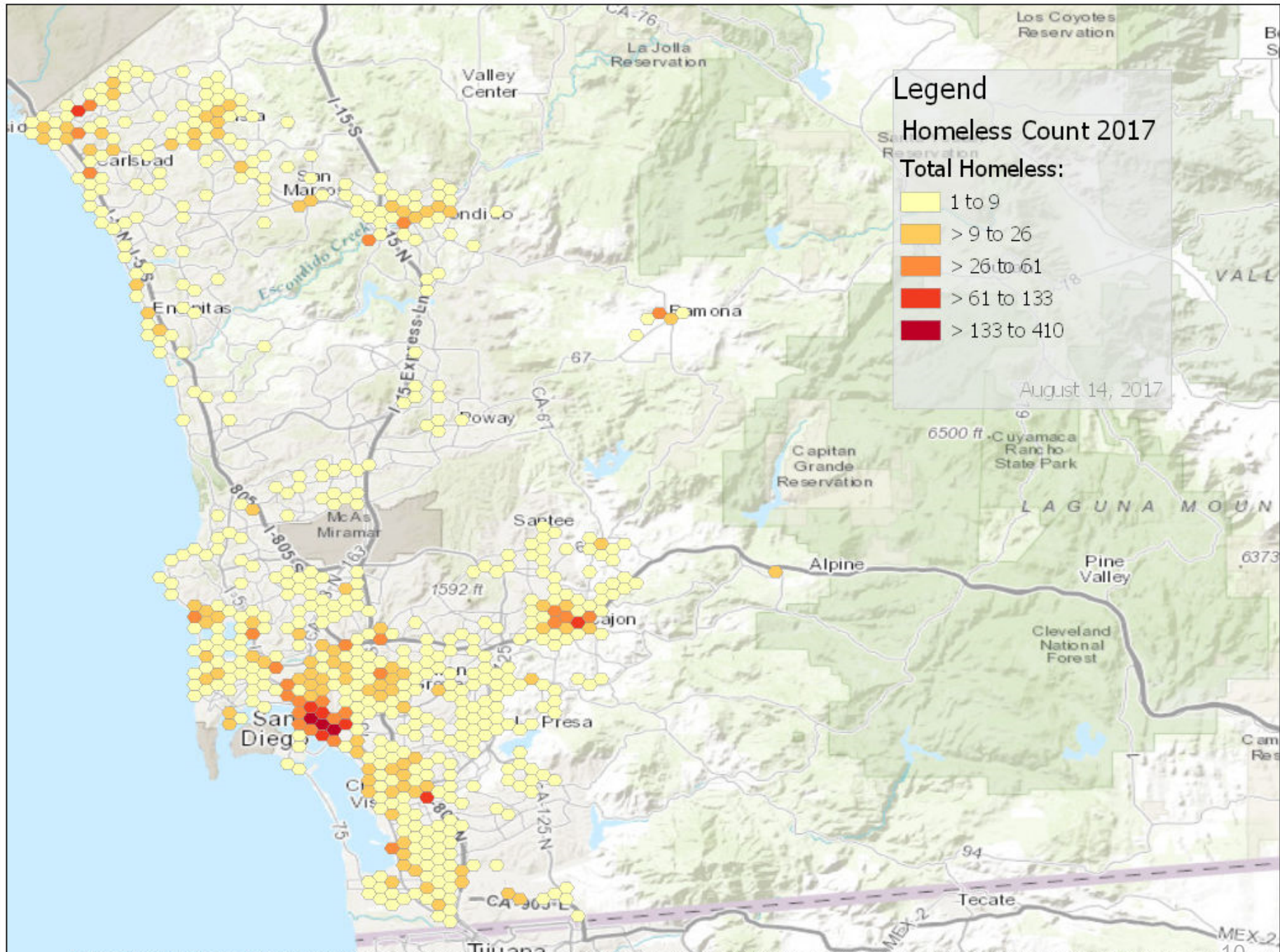


Outbreak-associated Hepatitis A cases by onset week

11/1/2016–8/14/2017, N = 333*

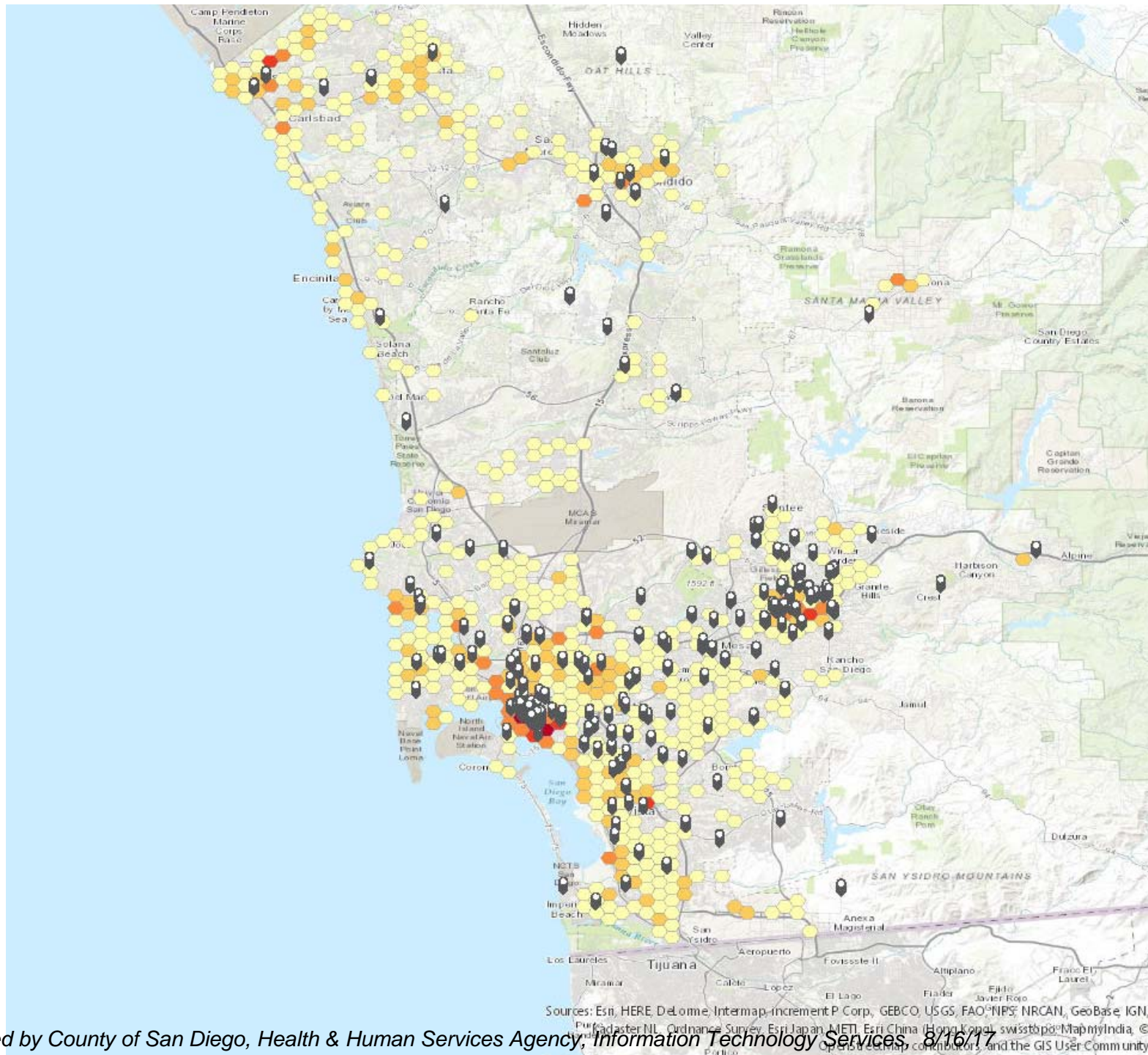


*Date of specimen collection or report used if onset date unknown; dates may change as information becomes available



Sources: Esri, HERE, DeLorme, Intermap, increment P Corp., GEBCO, USGS, FAO, NPS, NRCAN, GeoBase, IGN, Kadaster NL, Ordnance Survey, Esri Japan, METI, Esri China (Hong Kong), swisstopo, MapmyIndia, ©

Prepared by County of San Diego, Health & Human Services Agency, Information Technology Services, 8/16/17



PUBLIC HEALTH ACTIONS



- **Six health alerts (recent [Health Alert 8/16/17](#)), six news stories and [webpage](#) established**
- **~5,800 doses of HAV vaccine given at vaccination events, psych hospital, TB/STD clinics, and via jails to at-risk individuals**
- **Partnering with community stakeholders to increase vaccination (>15,800 doses), infection control, awareness**
- **Working closely with DEH on possible food sources**
- **Case investigations, post-exposure prophylaxis, surveillance (includes RTFH database), public education ongoing**
- **Local recommendations for occupational vaccination**



- **Stationing nurses at sites:**
 - **Central Jail Intake – since 7/3/17**
 - **St. Vincent’s Family Health Center – next week**
 - **Neil Good Day Center – next week**
 - **Sharp Mesa Vista – in progress**
 - **Alpha Project – in progress**
 - **Salvation Army – in progress**
 - **Rachel Women's Shelter – in progress**
 - **Others?**

- **Systems approaches**
 - **House of Metamorphosis routinely brings clients to PH Center**
 - **Probation routinely brings clients to TB Clinic and PH Center**
 - **Some SUD programs are including it into their treatment goals**

POSTER



 **LIVE WELL
SAN DIEGO**



Protect yourself from Hepatitis A

**Get vaccinated and
wash your hands after using
the restroom and before eating.**

San Diego is in the midst of a Hepatitis A outbreak.
Call 2-1-1 to find a vaccine clinic near you.



HYGIENE KITS



**LIVE WELL
SAN DIEGO**



PHS staff member with Hygiene kits for distribution to raise awareness among homeless about hepatitis.

They contain water, non-alcohol hand sanitizer, cleaning wipes, clinic location information, and plastic bags.



“Foot team” vaccination in downtown San Diego 6/8/17 with volunteers from Friend to Friend, Episcopal Community Services

CALL TO ACTION



 LIVE WELL
SAN DIEGO

- **Educate**
- **Immunize**
- **Sanitize**





For more information contact:

Sayone Thihalolipavan, MD, MPH

Deputy Public Health Officer

Public Health Services

County of San Diego Health and Human Services Agency

3851 Rosecrans Street (MS-P578)

San Diego, CA 92110

Phone: (619) 542-4916

Email: sayone.thihalolipavan@sdcounty.ca.gov