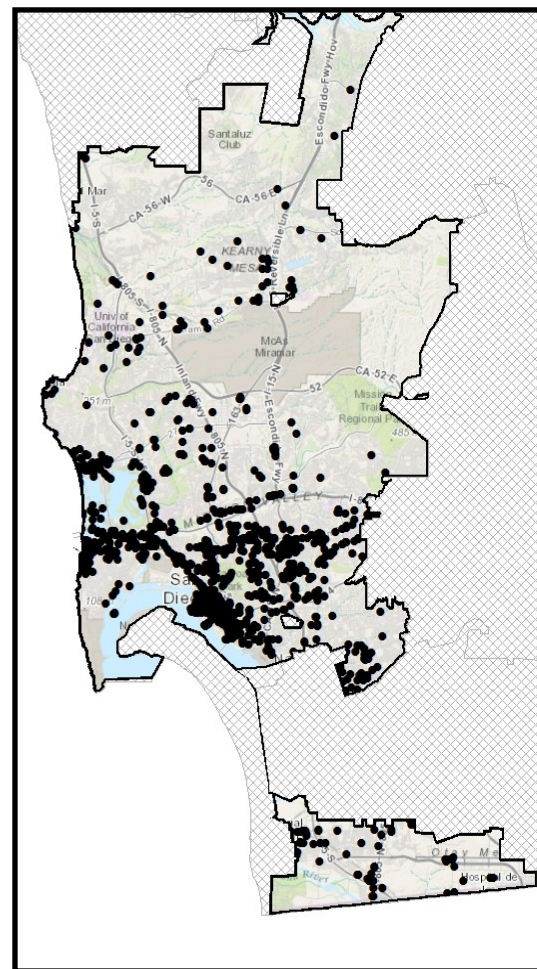
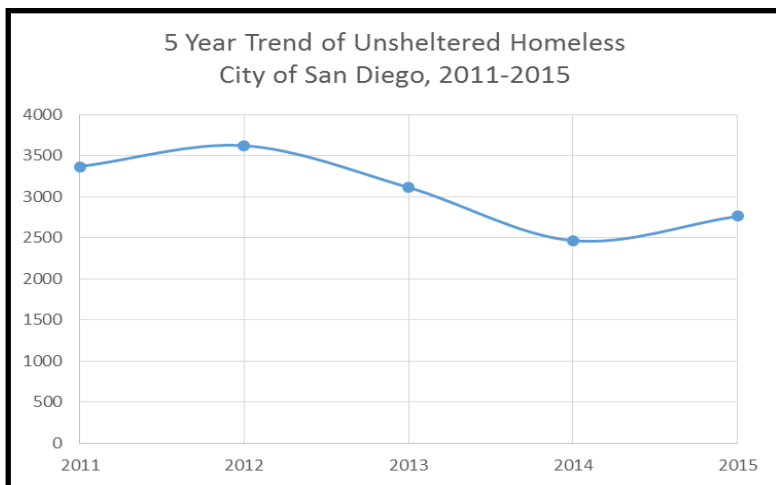


City of San Diego Homeless Profile



Unsheltered Homeless City of San Diego, 2015		
	% of unsheltered in City of San Diego	Total in City of San Diego
Chronically Homeless	36%	995
Veteran	17%	470
Substance Abuse	10%	277
Severe Mental Illness	23%	636
Currently on Probation or Parole	13%	359
Used Emergency Room in the Past Year	49%	1355
Male	70%	1936
Female	28%	774

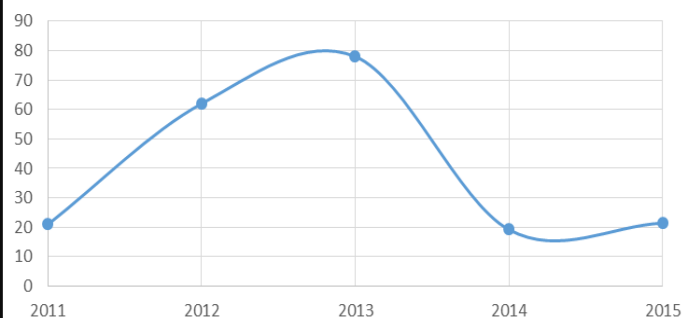
Sheltered: 2773				Unsheltered: 2765				Total: 5538	
Emergency Shelter	Supportive Housing	Transitional Housing	Total	Individual	Vehicle*	Hand Built Structure/tent*	Total	Total	% of Total
889	43	1841	2773	1372	543	248	2765	5538	65%

*For the "Total" columns, vehicles and HBS / tents were multiplied by an occupancy factor between 1.46 and 1.83.

City of Carlsbad

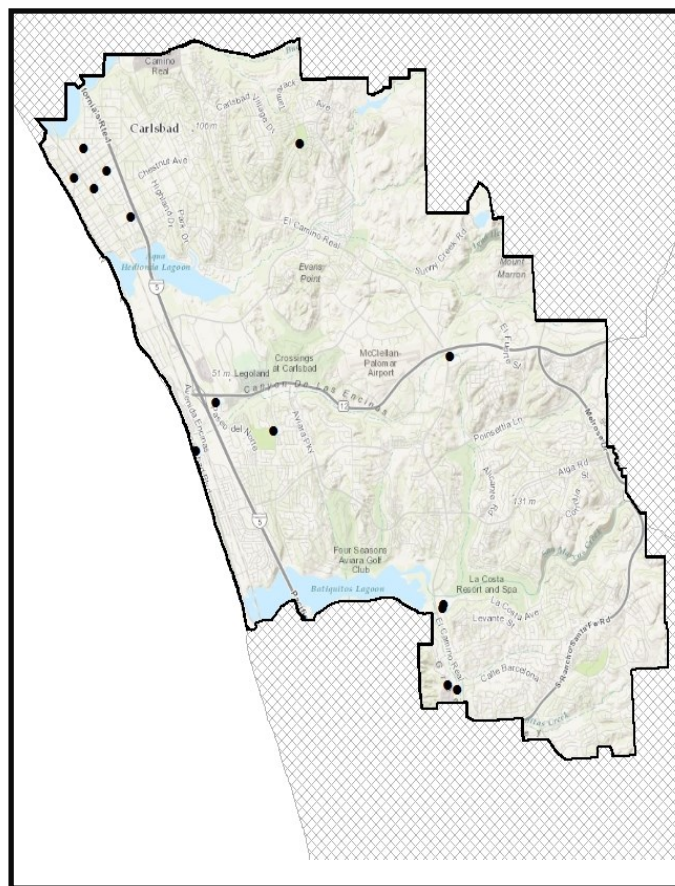
Homeless Profile

5 Year Trend of Unsheltered Homeless
Carlsbad, 2011-2015



Unsheltered Homeless
Carlsbad, 2015

	% of unsheltered in Carlsbad	Total in Carlsbad
Chronically Homeless	60%	13
Veteran	40%	8
Substance Abuse	60%	13
Severe Mental Illness	20%	4
Currently on Probation or Parole	40%	8
Used Emergency Room in the Past Year	20%	4
Female	0%	0

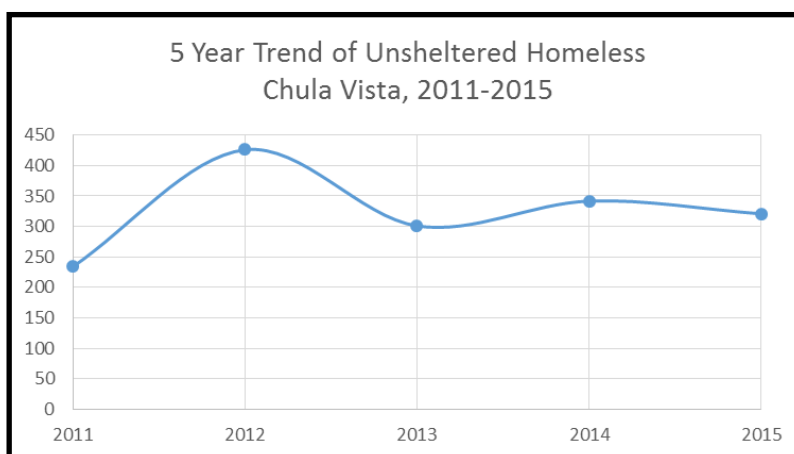
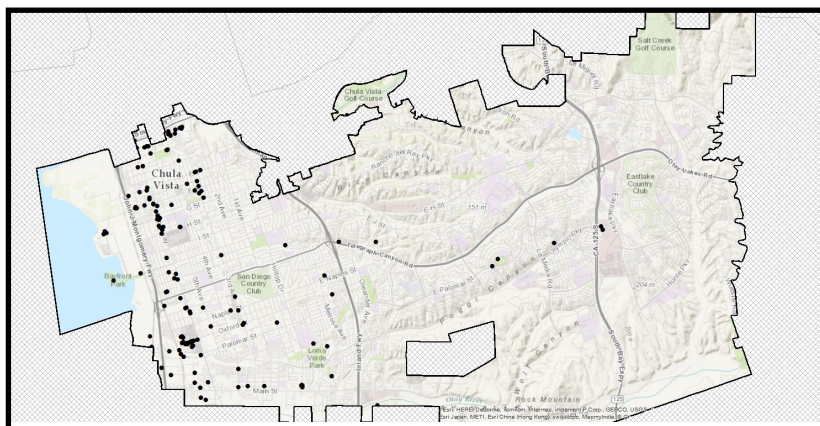


Sheltered: 67				Unsheltered: 21				Total: 88	
Emergency Shelter	Supportive Housing	Transitional Housing	Total	Individual	Vehicle*	Hand Built Structure/tent*	Total	Total	% of Total
67	0	0	67	5	10	0	21	88	1%

*For the "Total" columns, vehicles and HBS/tents were multiplied by an occupancy factor between 1.46 and 1.83.

City of Chula Vista

Homeless Profile



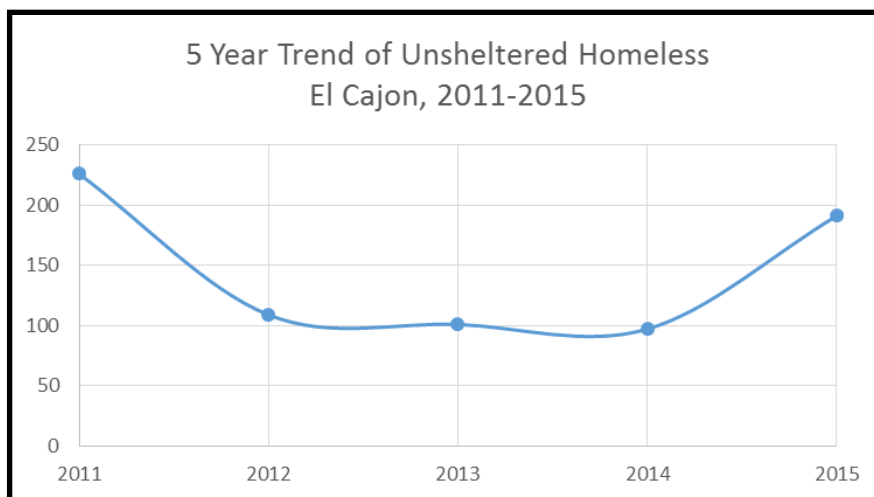
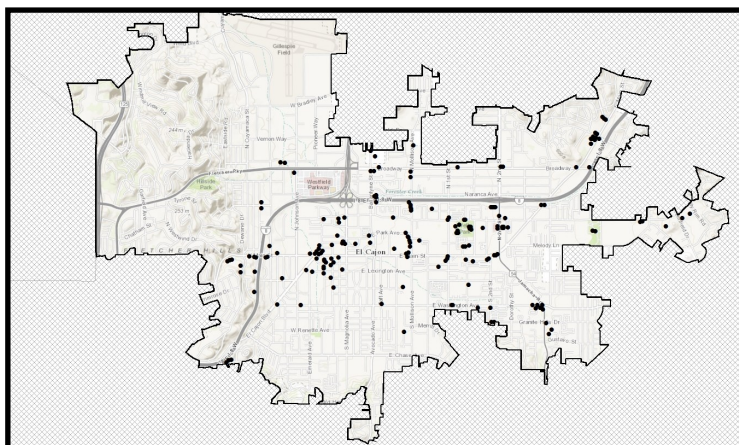
Unsheltered Homeless Chula Vista, 2015		
	% of unsheltered in Chula Vista	Total in Chula Vista
Chronically Homeless	60%	193
Veteran	9%	29
Substance Abuse	9%	29
Severe Mental Illness	10%	32
Currently on Probation or Parole	19%	61
Used Emergency Room in the Past Year	52%	167
Female	41%	132

Sheltered: 177				Unsheltered: 321				Total: 498	
Emergency Shelter	Supportive Housing	Transitional Housing	Total	Individual	Vehicle*	Hand Built Structure/tent*	Total	Total	% of Total
19	0	158	177	61	120	25	321	498	6%

*For the "Total" columns, vehicles and HBS/tents were multiplied by an occupancy factor between 1.46 and 1.83.

City of El Cajon

Homeless Profile



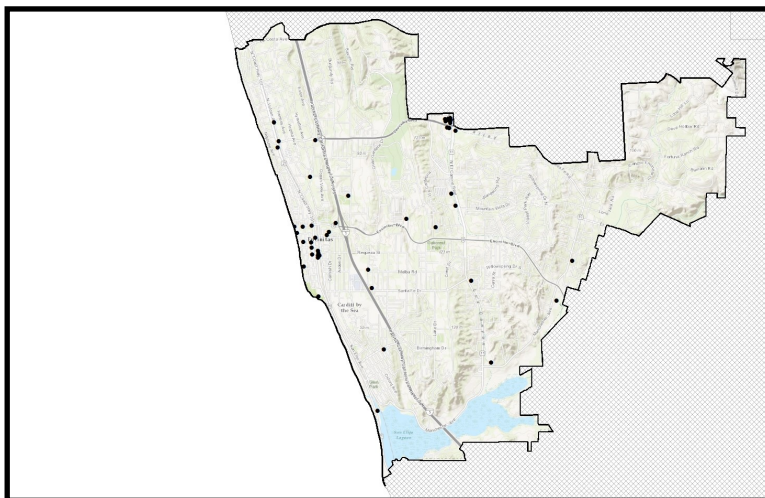
Unsheltered Homeless El Cajon, 2015		
	% of unsheltered in El Cajon	Total in El Cajon
Chronically Homeless	13%	25
Veteran	11%	21
Substance Abuse	4%	8
Severe Mental Illness	17%	32
Currently on Probation or Parole	21%	40
Used Emergency Room in the Past Year	39%	74
Female	37%	71

Sheltered: 520				Unsheltered: 191				Total: 711	
Emergency Shelter	Supportive Housing	Transitional Housing	Total	Individual	Vehicle*	Hand Built Structure/tent*	Total	Total	% of Total
202	0	318	520	130	29	13	191	711	8%

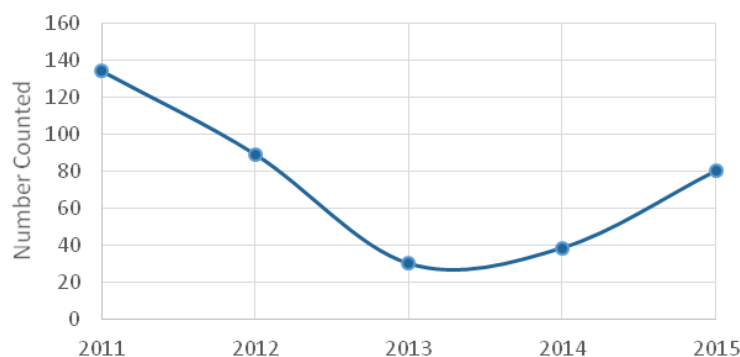
*For the "Total" columns, vehicles and HBS/tents were multiplied by an occupancy factor between 1.46 and 1.83.

City of Encinitas

Homeless Profile



5 Year Trend of Unsheltered Homeless
Encinitas, 2011-2015



Unsheltered Homeless Encinitas, 2015		
	% of unsheltered in Encinitas	Total in Encinitas
Chronically Homeless	50%	40
Veteran	25%	20
Substance Abuse	13%	10
Severe Mental Illness	0%	0
Currently on Probation or Parole	25%	20
Used Emergency Room in the Past Year	75%	60
Female	12%	10

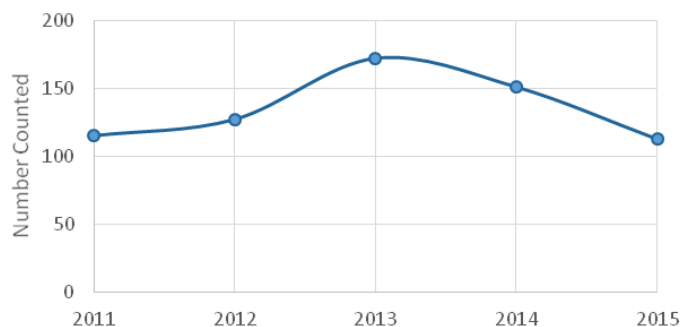
Sheltered: 43				Unsheltered: 80				Total: 123	
Emergency Shelter	Supportive Housing	Transitional Housing	Total	Individual	Vehicle*	Hand Built Structure/tent*	Total	Total	% of Total
30	0	13	43	21	36	0	80	123	1%

*For the "Total" columns, vehicles and HBS/tents were multiplied by an occupancy factor between 1.46 and 1.83.

City of Escondido

Homeless Profile

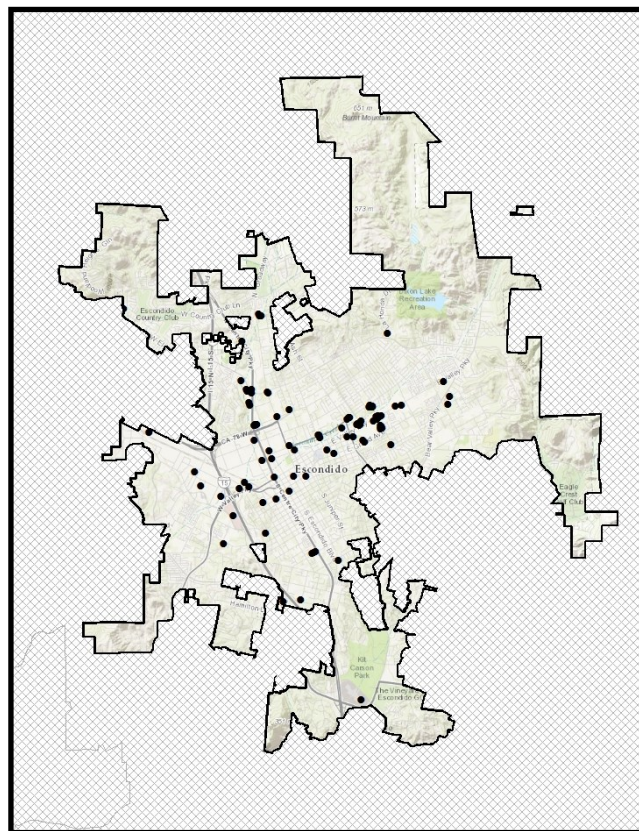
5 Year Trend of Unsheltered Homeless
Escondido, 2011-2015



Unsheltered Homeless

Escondido, 2015

	% of unsheltered in Escondido	Total in Escondido
Chronically Homeless	23%	26
Veteran	15%	17
Substance Abuse	6%	7
Severe Mental Illness	15%	17
Currently on Probation or Parole	19%	21
Used Emergency Room in the Past Year	43%	48
Female	23%	26



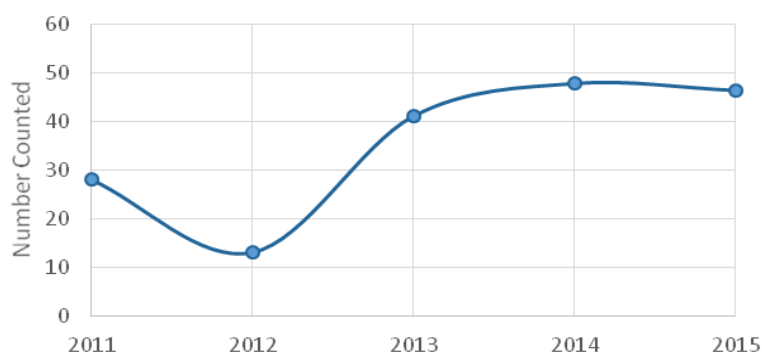
Sheltered: 318				Unsheltered: 112				Total: 430	
Emergency Shelter	Supportive Housing	Transitional Housing	Total	Individual	Vehicle*	Hand Built Structure/tent*	Total	Total	% of Total
60	9	249	318	75	17	6	112	430	5%

*For the 'Total' columns, vehicles and HBS/tents were multiplied by an occupancy factor between 1.46 and 1.83.

City of Imperial Beach

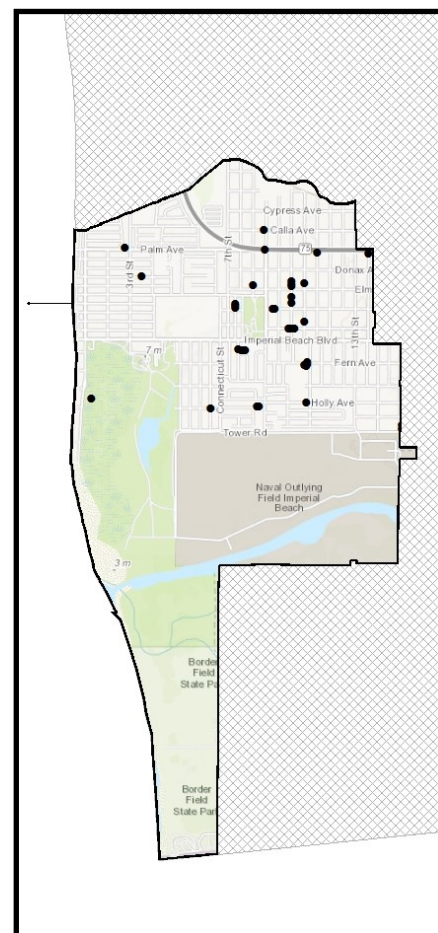
Homeless Profile

5 Year Trend of Unsheltered Homeless
Imperial Beach, 2011-2015



Unsheltered Homeless
Imperial Beach, 2015

	% of unsheltered in Imperial Beach	Total in Imperial Beach
Chronically Homeless	20%	9
Veteran	20%	9
Substance Abuse	0%	0
Severe Mental Illness	0%	0
Currently on Probation or Parole	0%	0
Used Emergency Room in the Past Year	60%	28
Female	20%	9

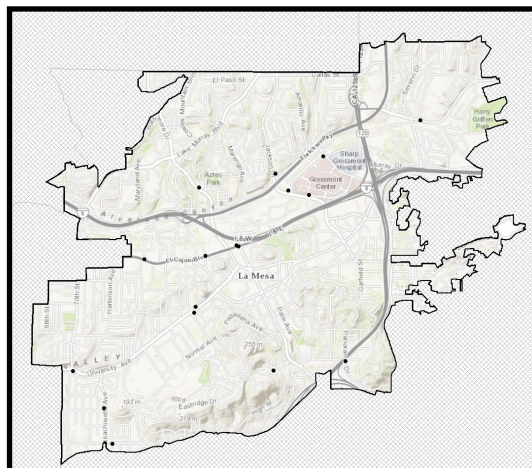


Sheltered: 0				Unsheltered: 46				Total: 46	
Emergency Shelter	Supportive Housing	Transitional Housing	Total	Individual	Vehicle*	Hand Built Structure/tent*	Total	Total	% of Total
0	0	0	0	39	4	0	46	46	1%

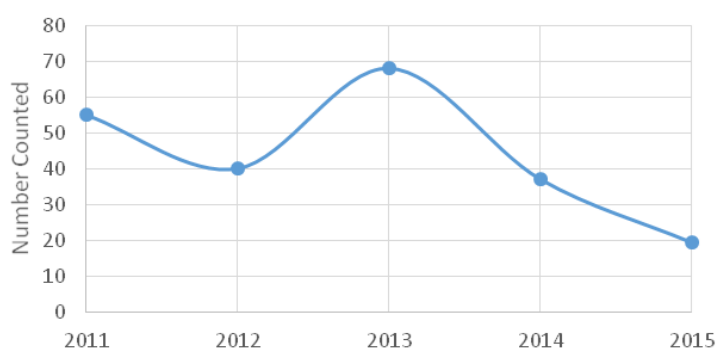
*For the "Total" columns, vehicles and HBS/tents were multiplied by an occupancy factor between 1.46 and 1.83.

City of La Mesa

Homeless Profile



5 Year Trend of Unsheltered Homeless
La Mesa, 2011-2015



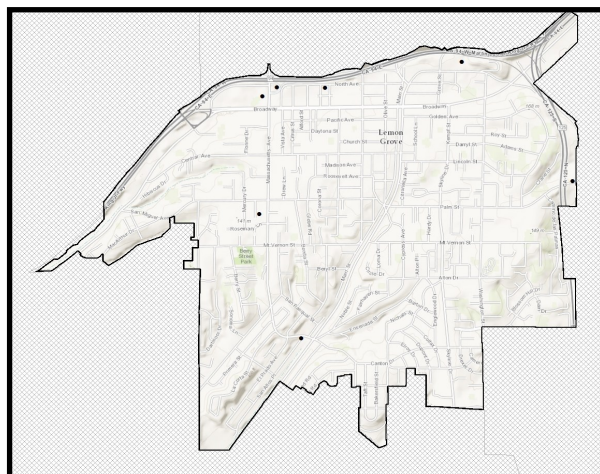
Unsheltered Homeless La Mesa, 2015		
	% of unsheltered in La Mesa	Total in La Mesa
Chronically Homeless	0%	0
Veteran	11%	2
Substance Abuse	0%	0
Severe Mental Illness	0%	0
Currently on Probation or Parole	11%	2
Used Emergency Room in the Past Year	56%	11
Female	33%	6

Sheltered: 0				Unsheltered: 19				Total: 19	
Emergency Shelter	Supportive Housing	Transitional Housing	Total	Individual	Vehicle*	Hand Built Structure/tent*	Total	Total	% of Total
0	0	0	0	15	3	0	19	19	0.2%

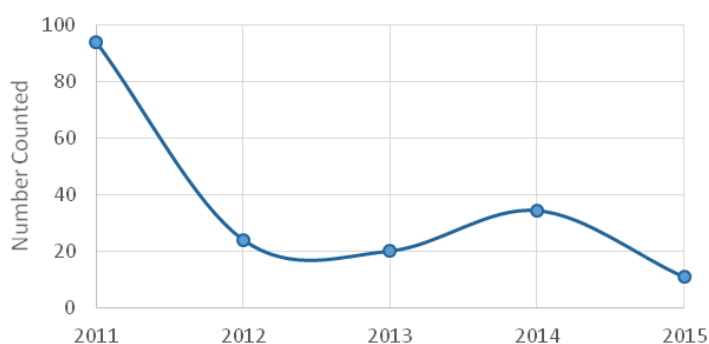
*For the "Total" columns, vehicles and HBS/tents were multiplied by an occupancy factor between 1.46 and 1.83.

City of Lemon Grove

Homeless Profile



5 Year Trend of Unsheltered Homeless
Lemon Grove, 2011-2015



Unsheltered Homeless

Lemon Grove, 2015

	% of unsheltered in Lemon Grove	Total in Lemon Grove
Chronically Homeless	13%	1
Veteran	11%	1
Substance Abuse	4%	0
Severe Mental Illness	17%	2
Currently on Probation or Parole	21%	2
Used Emergency Room in the Past Year	39%	4
Female	37%	4

Sheltered: 0

Unsheltered: 11

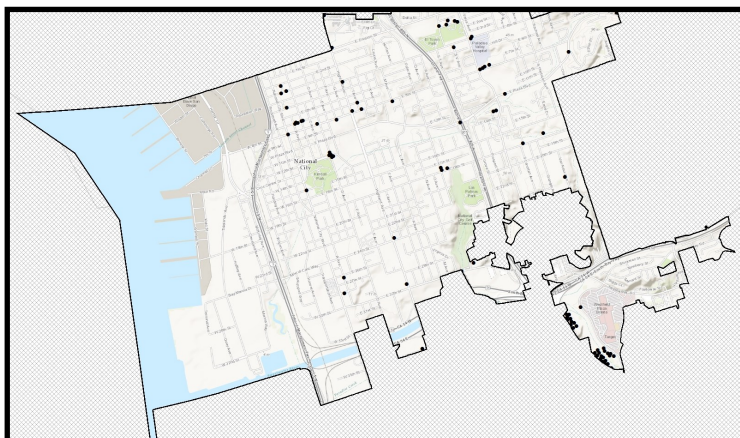
Total: 11

Emergency Shelter	Supportive Housing	Transitional Housing	Total	Individual	Vehicle*	Hand Built Structure/tent*	Total	Total	% of Total
0	0	0	0	2	3	3	11	11	0.1%

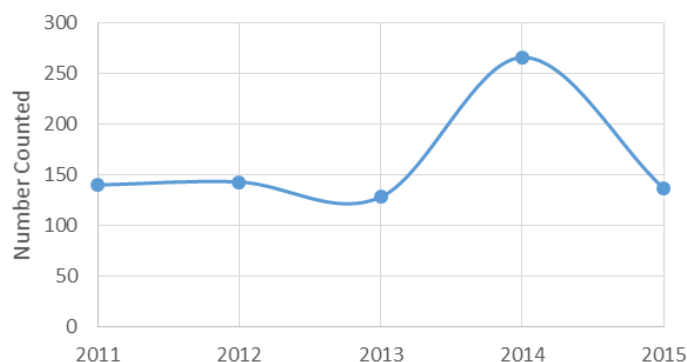
*For the "Total" columns, vehicles and HBS/tents were multiplied by an occupancy factor between 1.46 and 1.83.

National City

Homeless Profile



5 Year Trend of Unsheltered Homeless
National City, 2011-2015

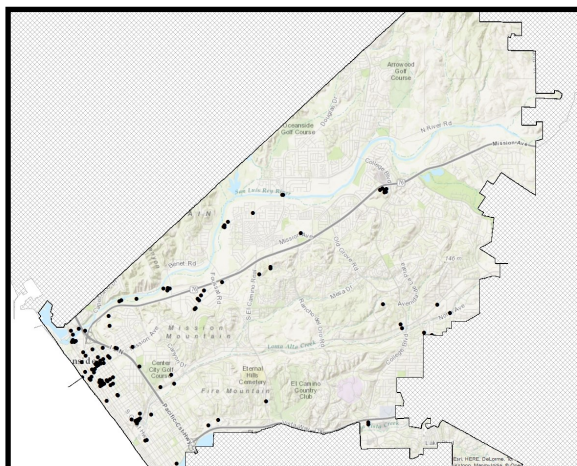


Unsheltered Homeless National City, 2015		
	% of unsheltered in National City	Total in National City
Chronically Homeless	50%	68
Veteran	6%	8
Substance Abuse	6%	8
Severe Mental Illness	22%	30
Currently on Probation or Parole	11%	15
Used Emergency Room in the Past Year	44%	60
Female	50%	68

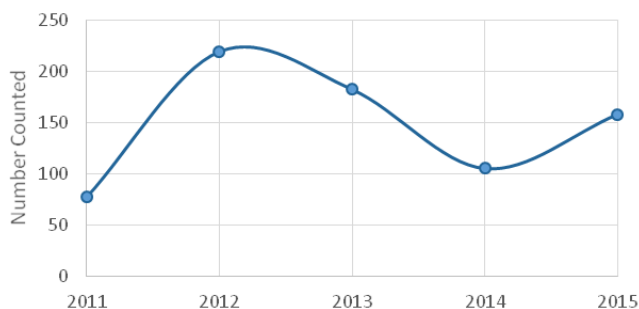
Sheltered: 16				Unsheltered: 137				Total: 153	
Emergency Shelter	Supportive Housing	Transitional Housing	Total	Individual	Vehicle*	Hand Built Structure/tent*	Total	Total	% of Total
0	0	16	16	43	23	32	137	153	2%

*For the "Total" columns, vehicles and HBS / tents were multiplied by an occupancy factor between 1.46 and 1.83.

City of Oceanside Homeless Profile



5 Year Trend of Unsheltered Homeless
City of Oceanside, 2011-2015



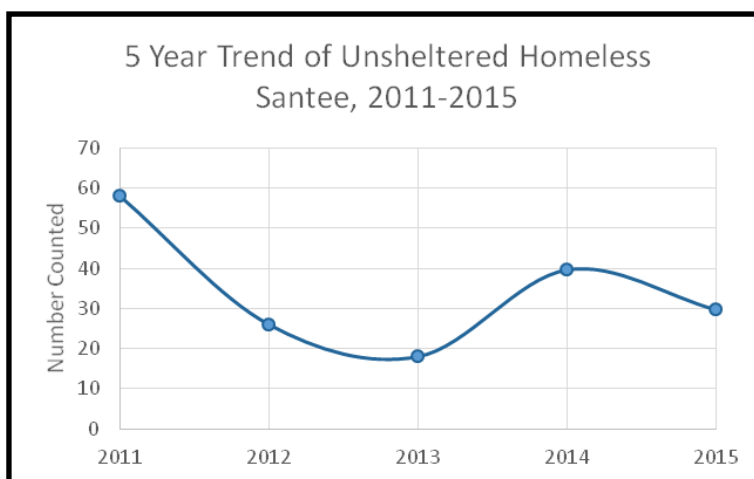
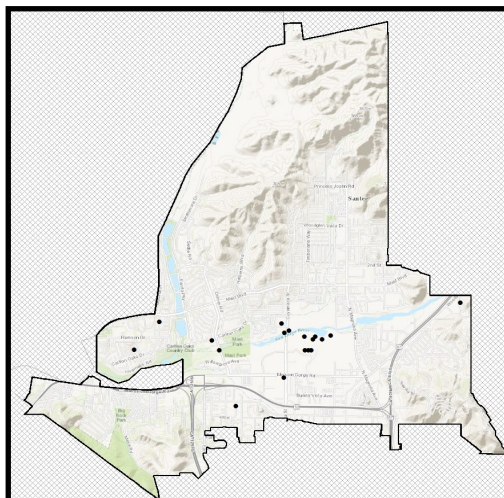
Unsheltered Homeless City of Oceanside, 2015		
	% of unsheltered in City of Oceanside	Total in City of Oceanside
Chronically Homeless	27%	43
Veteran	31%	49
Substance Abuse	12%	19
Severe Mental Illness	23%	36
Currently on Probation or Parole	8%	13
Used Emergency Room in the Past Year	38%	60
Female	19%	30

Sheltered: 262				Unsheltered: 158				Total: 420	
Emergency Shelter	Supportive Housing	Transitional Housing	Total	Individual	Vehicle*	Hand Built Structure/tent*	Total	Total	% of Total
62	0	200	262	91	28	13	158	420	5%

*For the "Total" columns, vehicles and HBS/tents were multiplied by an occupancy factor between 1.46 and 1.83.

City of Santee

Homeless Profile



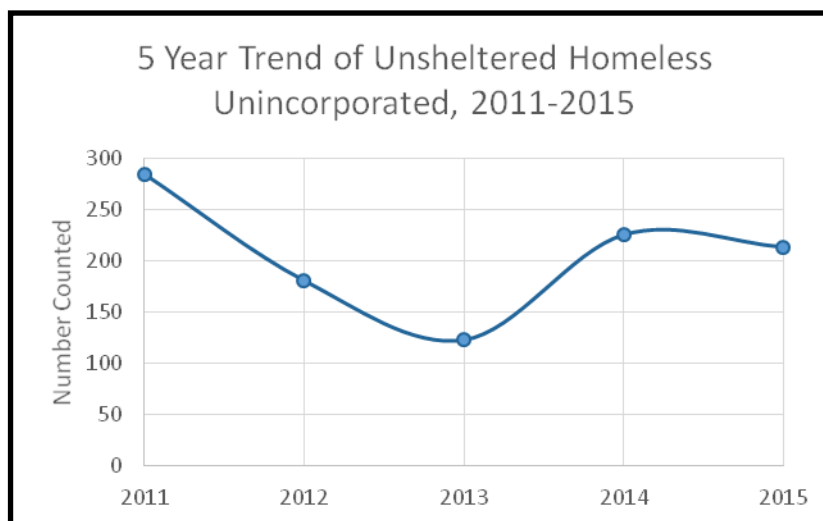
Unsheltered Homeless Santee, 2015		
	% of unsheltered in Santee	Total in Santee
Chronically Homeless	25%	7
Veteran	25%	7
Substance Abuse	0%	0
Severe Mental Illness	0%	0
Currently on Probation or Parole	0%	0
Used Emergency Room in the Past Year	50%	15
Female	0%	0

Sheltered: 0				Unsheltered: 30				Total: 30	
Emergency Shelter	Supportive Housing	Transitional Housing	Total	Individual	Vehicle*	Hand Built Structure/tent*	Total	Total	% of Total
0	0	0	0	5	3	14	30	30	0.3%

*For the "Total" columns, vehicles and HBS/tents were multiplied by an occupancy factor between 1.46 and 1.83.

Unincorporated Areas of San Diego County

Homeless Profile



Unsheltered Homeless Unincorporated Area, 2015		
	% of unsheltered in Unincorporated Area	Total in Unincorporated Area
Chronically Homeless	40%	85
Veteran	15%	32
Substance Abuse	15%	32
Severe Mental Illness	15%	32
Currently on Probation or Parole	28%	60
Used Emergency Room in the Past Year	40%	85
Female	21%	45

Unsheltered: 214			
Hand Built			
Individual	Vehicle*	Structure/tent*	Total
96	56	24	214

**For the 'Total' columns, vehicles and HBS/tents were multiplied by an occupancy factor between 1.46 and 1.83.*

*Unincorporated Areas of San Diego County refers to areas within San Diego County that do not fall within the boundaries of a city municipality.