

# San Diego YHDP Project Office Hours

Wednesday April 24th 1-2pm CT

Friday, April 26th 12-1pm CT



# What are Host Homes?

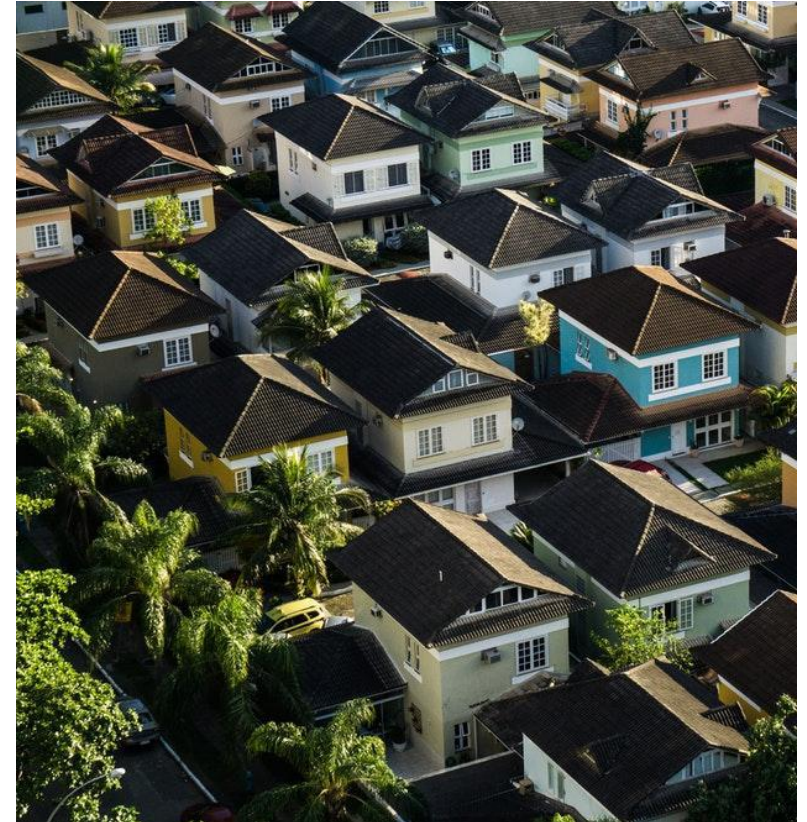
- Host homes are a flexible and cost-effective model for providing stable housing and supports. Host homes offer a home-like, non-institutional environment rooted in the community. They can be short-term or long-term placements.



# Guiding Principles

Diego's work to prevent & end youth homelessness is guided by **the following principles:**

- Positive Youth Development
- Trauma Informed Care
- Individualized and Youth Driven supports
- Youth Choice
- Family Engagement
- Social and Community Inclusion
- Youth Focused Housing First
- ***Youth participation in project design***
- Partnership and collaboration



## Project Target Populations

### Age Group

- Unaccompanied youth ages 18-24
- Unaccompanied minors ages 14-17

### Special Populations

- Youth connected to the child welfare system
- Pregnant and parenting youth
- LGBTQ
- Justice involved youth
- Human Trafficking and Commercial Sexual Exploitation, Victims of Domestic Violence

### HUD Eligibility

- Literally homeless
- Imminently at risk of homelessness
- Homeless under other federal statutes
- Fleeing or attempting to flee domestic violence, dating violence, sexual assault, or stalking and who lack resources and support networks to obtain other permanent housing.



# San Diego's Plan

We will support youth/their families to stay stabilized in housing, including through:

- Short-term “cool” beds to allow youth and families a time apart
- Mediation; Referrals
- Family/individual counseling

We will support youth to stay stabilized in post-secondary education, including through:

- Temporary housing during breaks
- Food/support with basic needs
- Case management

# Project Details

- Purpose of the project and its role in the community response
- How program exhibits CCP's guiding principles
- Host Recruitment
- Host Support
- Supportive Services Offered
- Model (Minors, post-secondary)
- Formal partnerships



# Eligible Expenses

Source: [https://www.hudexchange.info/resources/documents/CoCProgramInterimRule\\_FormattedVersion.pdf](https://www.hudexchange.info/resources/documents/CoCProgramInterimRule_FormattedVersion.pdf)

- Annual assessment of service need
- Assistance with moving costs
- Case management
- Child care
- Education services
- Employment assistance and training
- Food
- Housing search and counseling assistance
- Legal services
- Life skills training
- Mental health services
- Outreach services
- Outpatient health services
- Substance abuse treatment services
- Transportation
- Utility deposits
- Direct provision of services

# Match Requirements

The recipient or sub-recipient must match all grant funds, except for leasing funds, with no less than 25 percent of funds or in-kind contributions from other sources

- All match must be spent on eligible activities
- May include funds from any source, including any other federal sources (excluding Continuum of Care program funds), as well as State, local, and private sources, provided that funds from the source are not statutorily prohibited to be used as a match.
- May use the value of any real property, equipment, goods, or services contributed to the project as match, provided that if the recipient or sub-recipient had to pay for them with grant funds, the costs would have been eligible.

Source: [https://www.hudexchange.info/resources/documents/CoCProgramInterimRule\\_FormattedVersion.pdf](https://www.hudexchange.info/resources/documents/CoCProgramInterimRule_FormattedVersion.pdf)





# LGBT Center Host Home Program: A San Francisco YHDP Project

- Serves homeless LGBTQ youth ages 18-24 seeks to recruit at least 25 potential host homes and make 10-15 housing matches a year.
- Initial referral of prospective youth will come through Coordinated Entry
- Hiring Host Home Team of 1 FTE Program Manager, 2 FTE Case Manager and Program Assistant. Training HH Team including reviewing best practices and identifying additional training needs for HH Team.

# LGBT Center Host Home Program: A San Francisco YHDP Project

- Shared housing/RRH model
- Case Management will focus on preparing for the match, navigation into permanent stable housing, address any barriers for longer term housing stability, connection to necessary support services that include referrals and navigation/accompaniment for housing, health, and other basic needs services, employment services, life skills training, financial education and rental navigation and six months of aftercare to help ensure participants remain in permanent housing.
- Budget includes operating costs, transportation assistance, outreach and mental health services, food and case management services.

# Cautions/Considerations

- Ensure the host home is a youth-driven choice, not a placement
- Continue long-term efforts and education for host recruitment
- Provide hosts with training and ongoing support
- Use intensive and flexible case management
- Explore questions of host liability and licensure
- Integrate social activities and community



# Additional Resources:

- [HUD: Promising Program Models to End Youth Homelessness](#)
- Video example from PSY: <https://www.pointsourceyouth.org/host-homes>

# Thank you!

- If you have any further questions about this project component or the RFP, please direct those inquiries to [Youth@rtfhsd.org](mailto:Youth@rtfhsd.org)
- Thank you for all of your hard work!

