

2022 WeAllCount

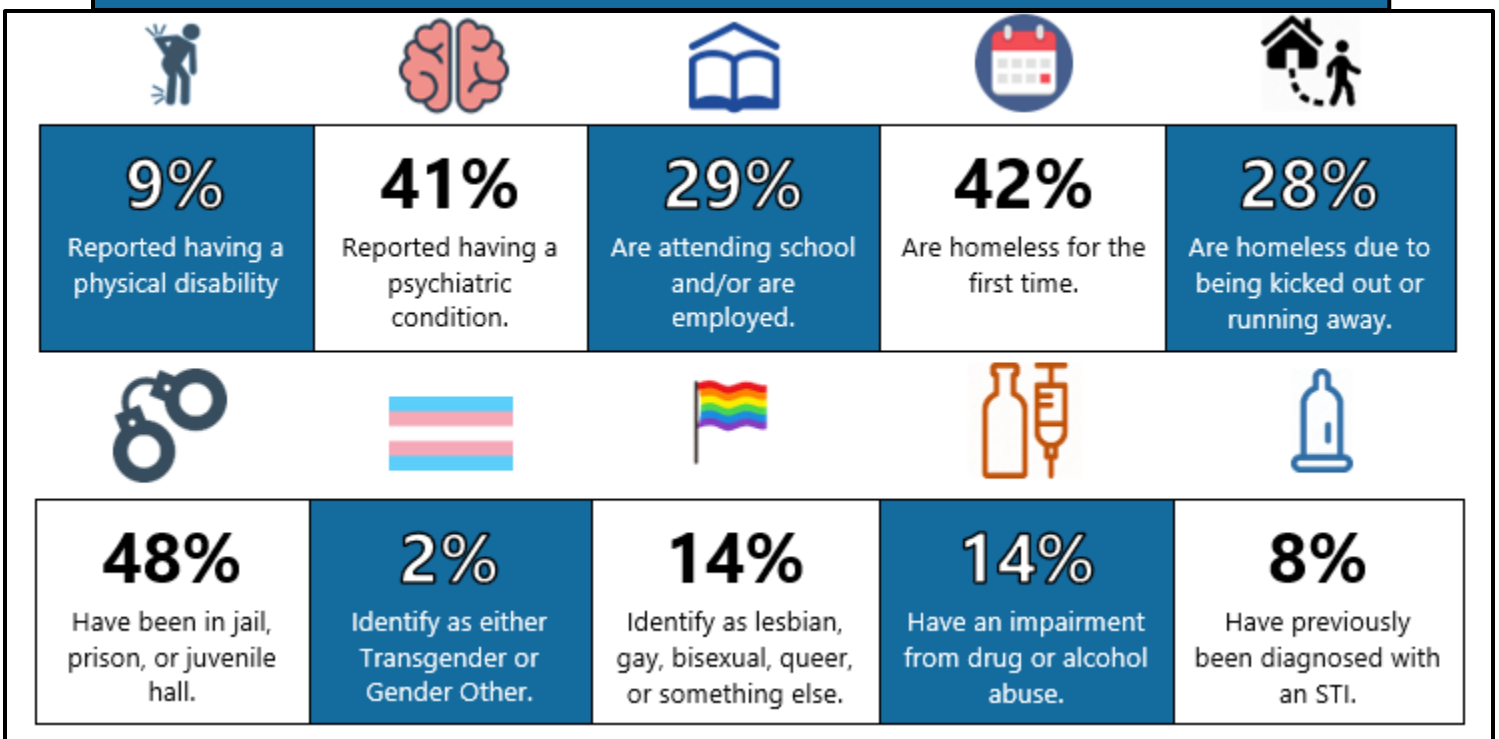
Data & Results: Youth

For the youth count, dedicated outreach workers lead teams to canvas the county accompanied by homeless or formally homeless youth who have a personal knowledge of where to find 'hidden' youth. This week-long effort includes outreach as well as event-based approaches to reach as many youths as possible. Additionally, the providers and outreach teams survey youth who are sheltered, unsheltered, and unstably housed. Unstably housed youth include those that were couch surfing the week of the youth count.

2022 WeAllCount Totals



2022 Homeless Youth Demographics



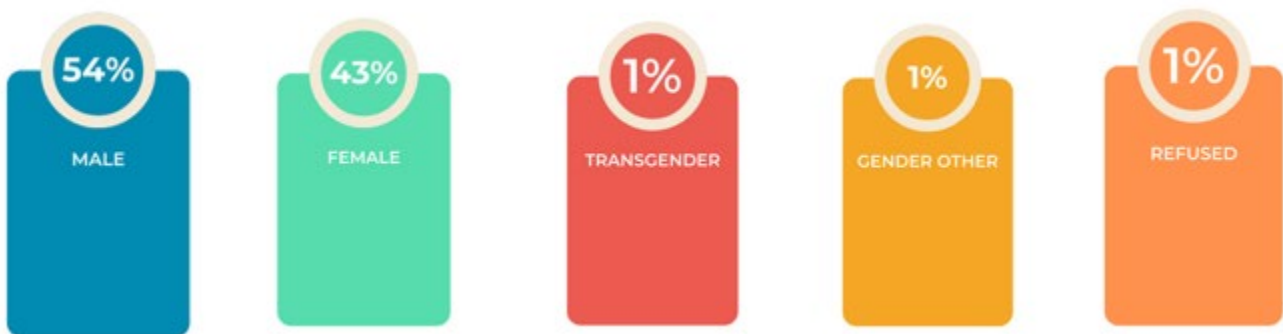
SAN DIEGO
Regional Task Force
on Homelessness

Additional Youth Demographics

Gender

(unsheltered youth only)

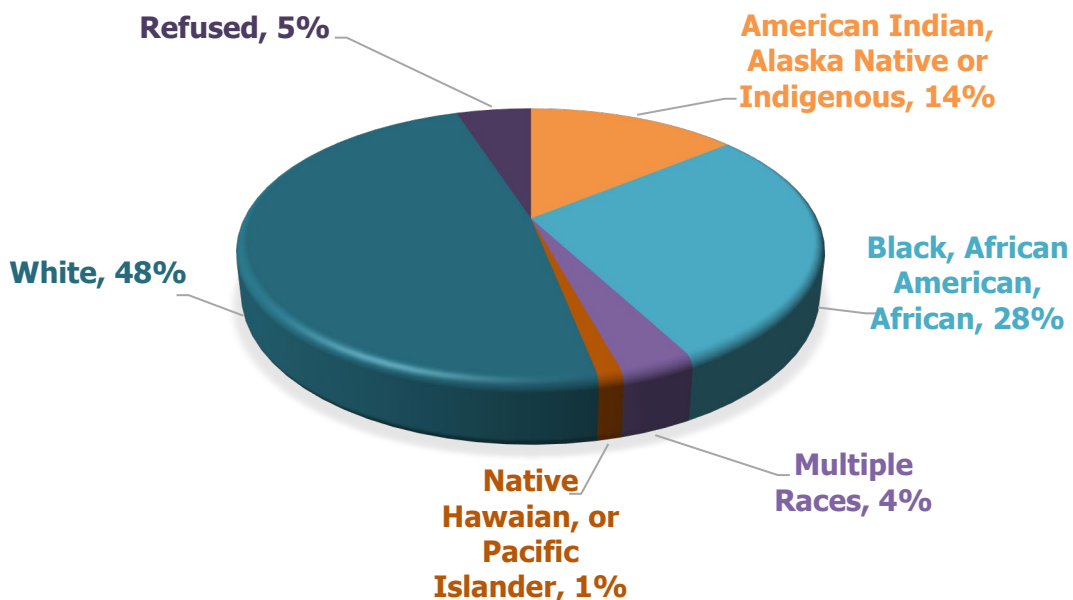
The following data reflects the gender breakdown for all *unsheltered* youth from the 2022 WeAllCount.



Race

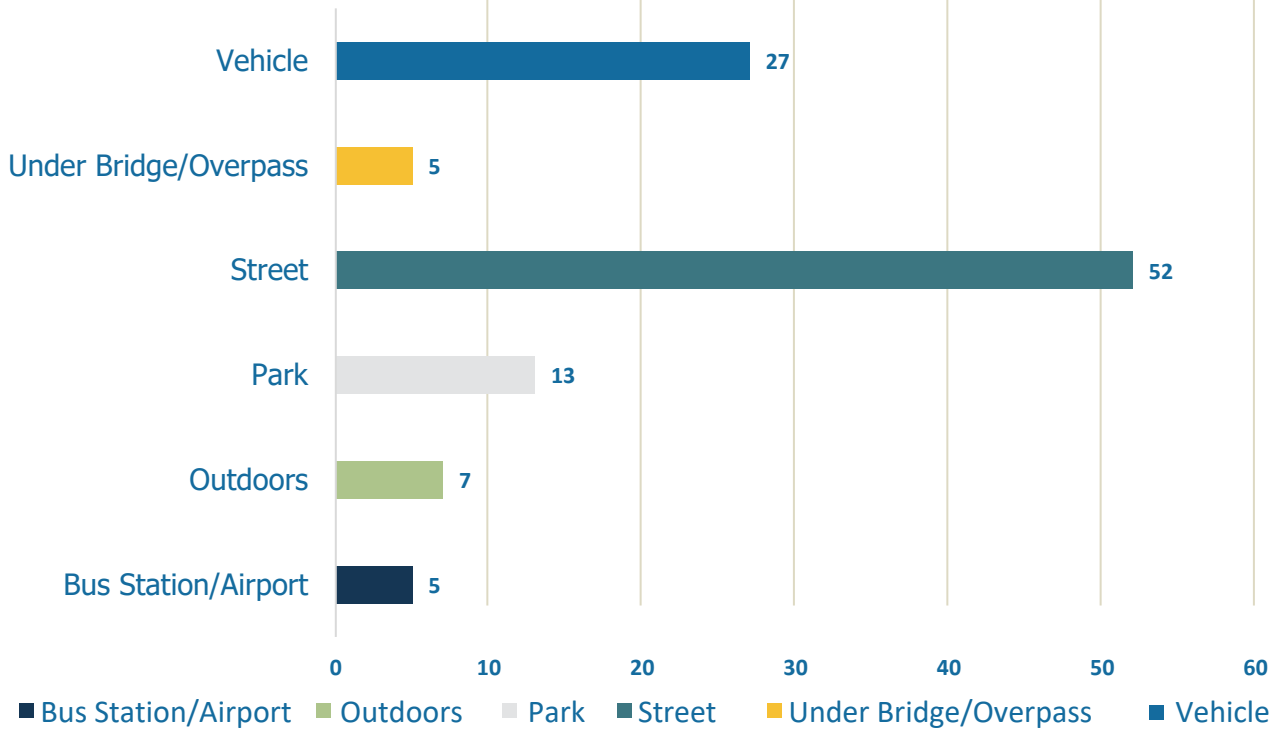
(unsheltered youth only)

The following data reflect the racial breakdown for all *unsheltered* youth from the 2022 WeAllCount.

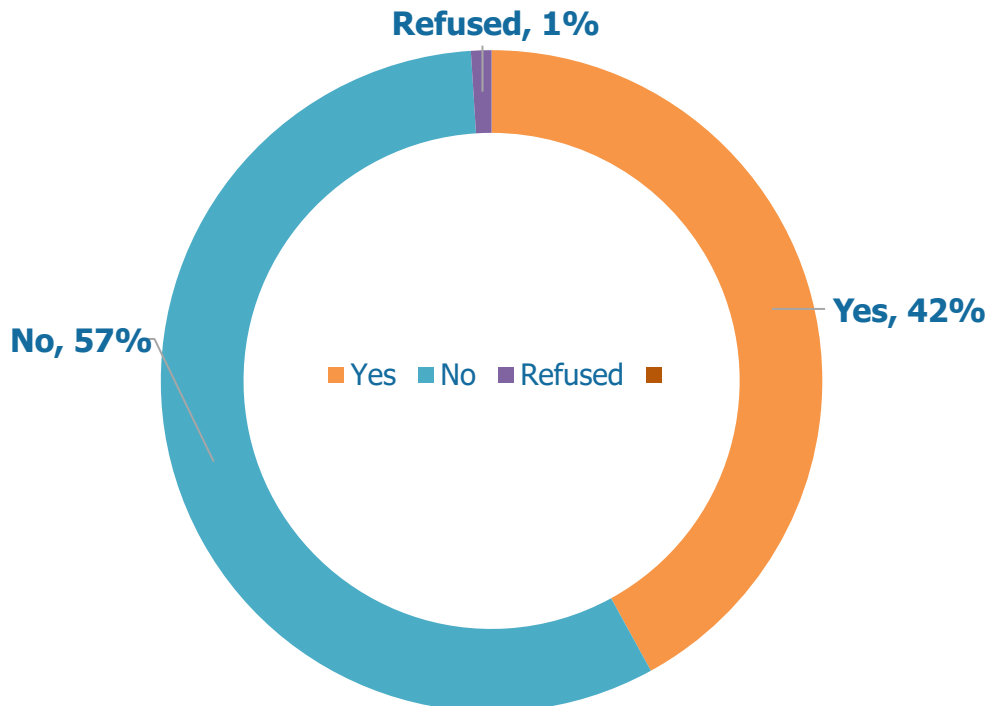


Sleeping Location

The following data is a breakdown of unsheltered youth's self reported sleeping location for the 2022 WeAllCount.



First Time Homeless (unsheltered youth only)



SAN DIEGO
Regional Task Force
on Homelessness