

# San Diego YHDP Project Office Hours

Tuesday, April 30<sup>th</sup> 12:00-1:00pm CT



# YHDP Funded Project Types

**Youth System Navigators-** will support identification of youth, navigation of coordinated entry and access to existing housing, connection to non-housing resources and mainstream benefits, and connection to other supports such as education and employment.

**Host Homes-** flexible and cost-effective model for providing stable housing and supports. Host homes offer a home-like, non-institutional environment rooted in the community. They can be short-term or long-term placements.

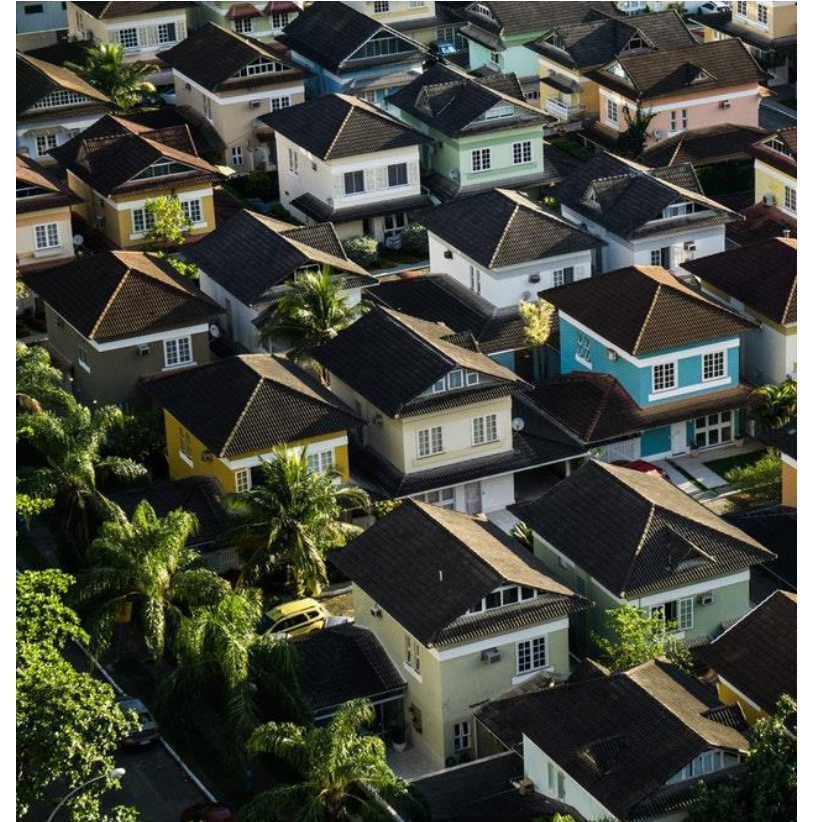
**Diversion:** aimed at connecting youth to safe, stable, and inclusive housing; permanent connections; employment, education and entrepreneurialism; and promoting social and emotional well-being.

**Non Time Limited Housing-** aimed at connecting youth to safe, permanent, and inclusive housing; permanent connections; employment, education and entrepreneurial opportunities; and promoting social and emotional well-being. Typically, 12-18 months of financial assistance, but up to 36 months for more vulnerable youth. Project Types: PH-RRH; TH-RRH; RRH; PH

# Guiding Principles

Diego's work to prevent & end youth homelessness is guided by **the following principles:**

- Positive Youth Development
- Trauma Informed Care
- Individualized and Youth Driven supports
- Youth Choice
- Family Engagement
- Social and Community Inclusion
- Youth Focused Housing First
- Youth participation in project design
- Partnership and collaboration



# Collaboration and Partnerships

- Strongly encouraged and intended to provide opportunities for meaningful and creative solutions to address youth homelessness.
- Collaborating agencies should plan, discuss and decide collectively to develop a joint competitive proposal. Within one project proposal, each entity should describe their role, capacity, services offered and commitment to meeting the project outcomes.
- If selected, a Memorandum of Agreement (MOA) will be required of the collaborative partners. The MOA will outline how all parties will ensure a coordinated effort across all YHDP funded projects and in alignment with the CCP.
- RTFH is offering each applicant a technical assistance opportunity to speak directly with RTFH staff regarding the proposed project partnership.

## Project Target Populations

### Age Group

- Unaccompanied youth ages 18-24
- Unaccompanied minors ages 14-17

### Special Populations

- Youth connected to the child welfare system
- Pregnant and parenting youth
- LGBTQ
- Justice involved youth
- Human Trafficking and Commercial Sexual Exploitation, Victims of Domestic Violence

### HUD Eligibility

- Literally homeless
- Imminently at risk of homelessness
- Homeless under other federal statutes (approval pending)
- Fleeing or attempting to flee domestic violence, dating violence, sexual assault, or stalking and who lack resources and support networks to obtain other permanent housing.

# Expected Outcomes

- **Increase** system capacity to triage, engage, and connect youth to supports.
- **Decrease** the number of youth who become homeless.
- **Decrease** the total number of youth experiencing unsheltered homelessness.
- **Increase** the number of youth who exit to stable housing.
- **Decrease** the length of stay/wait time for housing.
- **Increase** the number of youth in stable housing 12 months or more
- **Decrease** the number of youth returning to homelessness after 12 months.



# Eligible Expenses

- Annual assessment of service need
- Assistance with moving costs
- Case management
- Child care
- Education services
- Employment assistance and training
- Food
- Housing search and counseling assistance
- Legal services
- Life skills training
- Mental health services
- Outreach services
- Outpatient health services
- Substance abuse treatment services
- Transportation
- Utility deposits
- Direct provision of services

Source: [https://www.hudexchange.info/resources/documents/CoCProgramInterimRule\\_FormattedVersion.pdf](https://www.hudexchange.info/resources/documents/CoCProgramInterimRule_FormattedVersion.pdf)



# Match Requirements

The recipient or sub-recipient must match all grant funds, except for leasing funds, with no less than 25 percent of funds or in-kind contributions from other sources

- All match must be spent on eligible activities
- May include funds from any source, including any other federal sources (excluding Continuum of Care program funds), as well as State, local, and private sources, provided that funds from the source are not statutorily prohibited to be used as a match.
- May use the value of any real property, equipment, goods, or services contributed to the project as match, provided that if the recipient or sub-recipient had to pay for them with grant funds, the costs would have been eligible.

Source: [https://www.hudexchange.info/resources/documents/CoCProgramInterimRule\\_FormattedVersion.pdf](https://www.hudexchange.info/resources/documents/CoCProgramInterimRule_FormattedVersion.pdf)





# Thank You!

If you have any further questions about this project component or the RFP, please direct those inquiries to [Youth@rtfhsd.org](mailto:Youth@rtfhsd.org)

Thank you for all of your hard work!



# Additional Resources:

- <https://www.hudexchange.info/news/snaps-in-focus-the-new-joint-transitional-housing-and-rapid-re-housing-component/>
- <http://endhomelessness.org/wp-content/uploads/2017/06/RRH4YLC-Shared-Housing-Overview.pdf>
- <https://www.rtfhsd.org/wp-content/uploads/2017/06/Joint-TH-RRH-Project-Briefing-08312018.pdf>
- <https://www.hudexchange.info/homelessness-assistance/resources-for-homeless-youth/rrh-models-for-homeless-youth/>
- <https://www.hudexchange.info/resource/5323/rapid-rehousing-for-youth-suite/>
- <https://endhomelessness.org/resource/rapid-re-housing-for-youth-toolkit/>
- [HUD: Promising Program Models to End Youth Homelessness](#)
- [Point Source Youth Host Home Handbook](#)