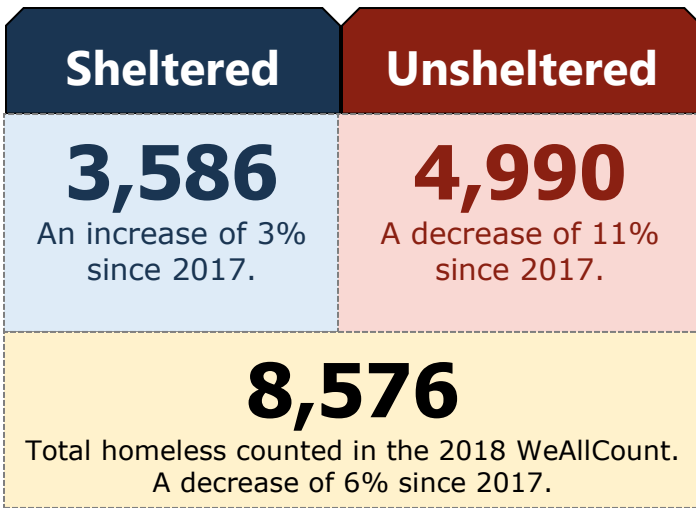


2018 WeALLCount

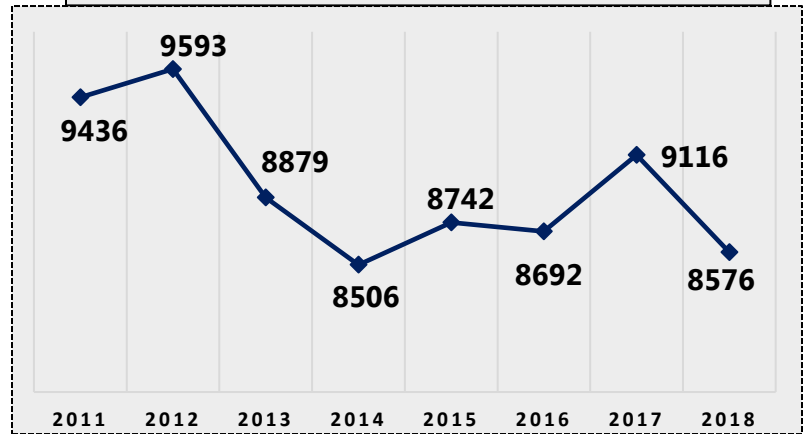
Data & Results: General

The WeAllCount, led by the Regional Task Force on the Homeless (RTFH), is how San Diego County determines how many homeless individuals and families we have in the San Diego Continuum of Care (CoC) on any given night. This snapshot allows the region to make informed decisions about our county and work toward sustainable solutions to homelessness.

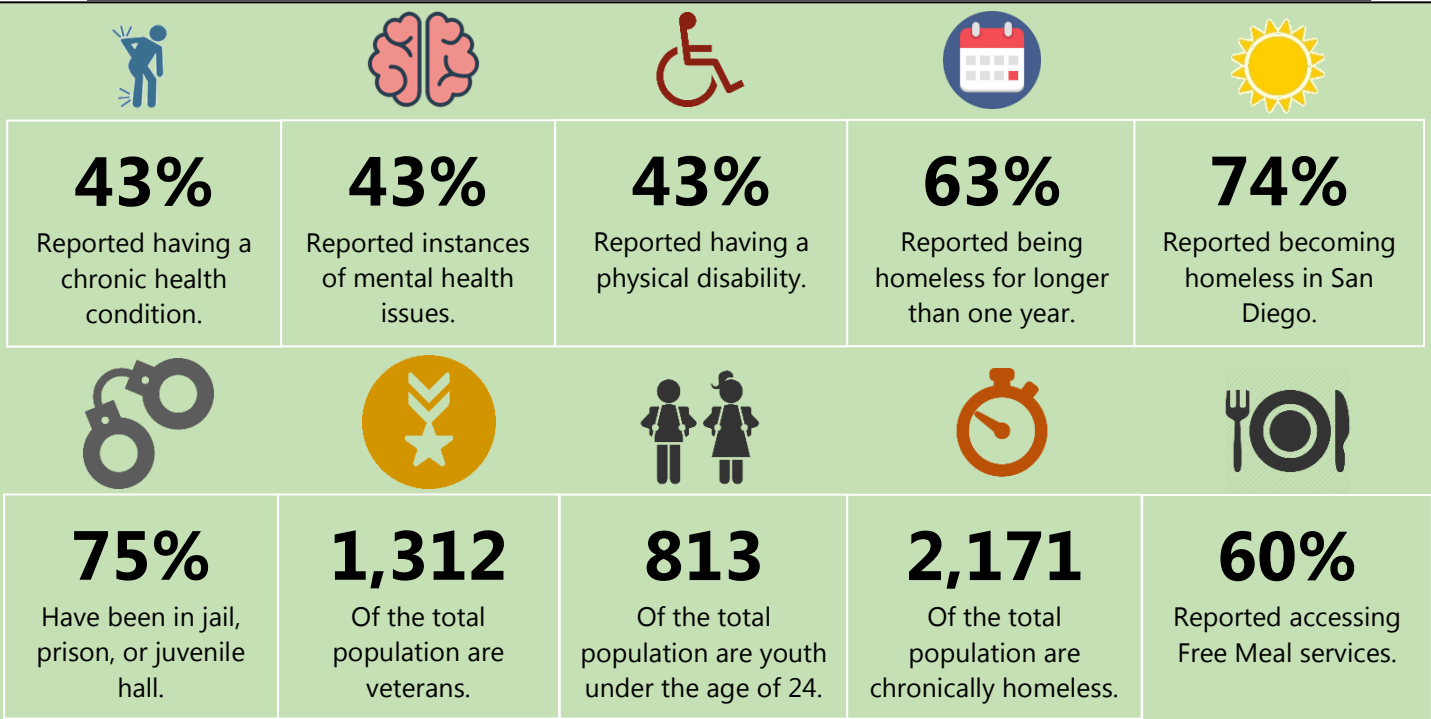
2018 WeAllCount Totals



Annual Homelessness Trends



Homelessness Demographics



Goal: REDUCE & END HOMELESSNESS in San Diego County

Rare, Brief and Non-Recurring

HOUSING FIRST



Coordinated Effective Regional System

Principles: Housing Focused, People Centered, Data Informed and Efficient Use of Resources



Political Will



System Access



Emergency Response



System Exit



Infrastructure

<p>Unified Leadership</p> <p>Process & Policy alignment</p> <p>Common agenda</p> <p>Shared measures</p>	<p>CES</p> <p>Coordinated Outreach</p> <p>Unsheltered and Chronic focus</p> <p>Diversion</p> <p>Prevention</p>	<p>Unsheltered Outreach</p> <p>Diversion Prevention</p> <p>Housing focused shelter system</p> <p>Rapid Rehousing</p>	<p>Housing First</p> <p>CES Prioritized housing placements</p> <p>Targeted sub-population resources</p> <p>Housing stability supports</p>	<p>HMIS data</p> <p>Training</p> <p>Evaluation</p> <p>Capacity building</p> <p>Performance measures</p>
---	--	--	---	---

Volunteering by the Numbers



1,318
Counters



318
Interviewers



4,908
Total Volunteer Hours



\$18 million
Federal funds allocated to San Diego based on WeAllCount data.

RTFH Supports

77
Agencies

310
Unique Programs

724
HMIS Individual Users

4699 Murphy Canyon Road • San Diego, CA 92123
www.rtfhsd.org • More information on the 2018 WeAllCount report



SAN DIEGO
Regional Task Force
on the Homeless

