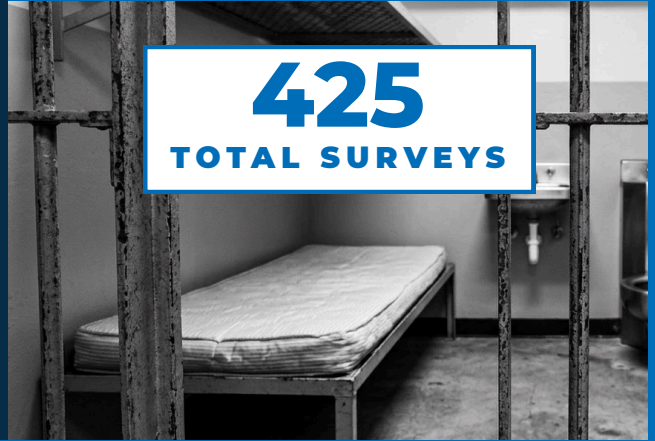
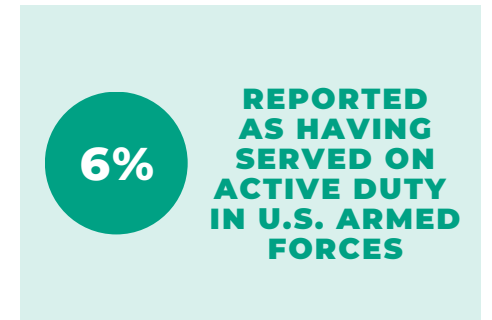
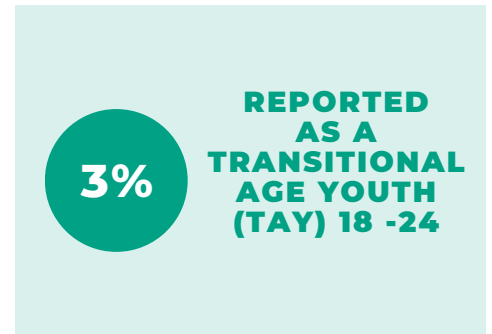
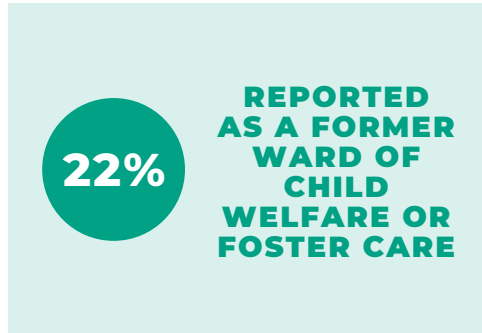


SINCE 2017, RTFH HAS PARTNERED WITH THE SAN DIEGO COUNTY SHERIFF'S OFFICE TO CONDUCT SURVEYS OF INCARCERATED PERSONS AS PART OF THE POINT-IN-TIME COUNT. IN 2026, SEVEN JAILS PARTICIPATED. ON THE NIGHT OF THE COUNT IN JANUARY, 4,139 PERSONS WERE INCARCERATED, AND 1,001 PERSONS (24%) WERE ASKED TO PARTICIPATE IN THE COUNT. OF THOSE SURVEYED, **42%**, TOTALING 425 PERSONS, REPORTED EXPERIENCING UNSHELTERED HOMELESSNESS PRIOR TO THEIR ARREST.

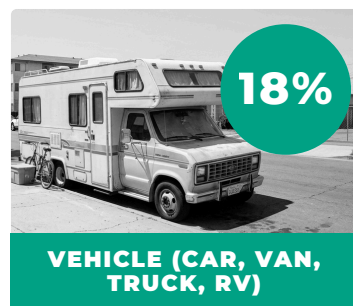


425
TOTAL SURVEYS

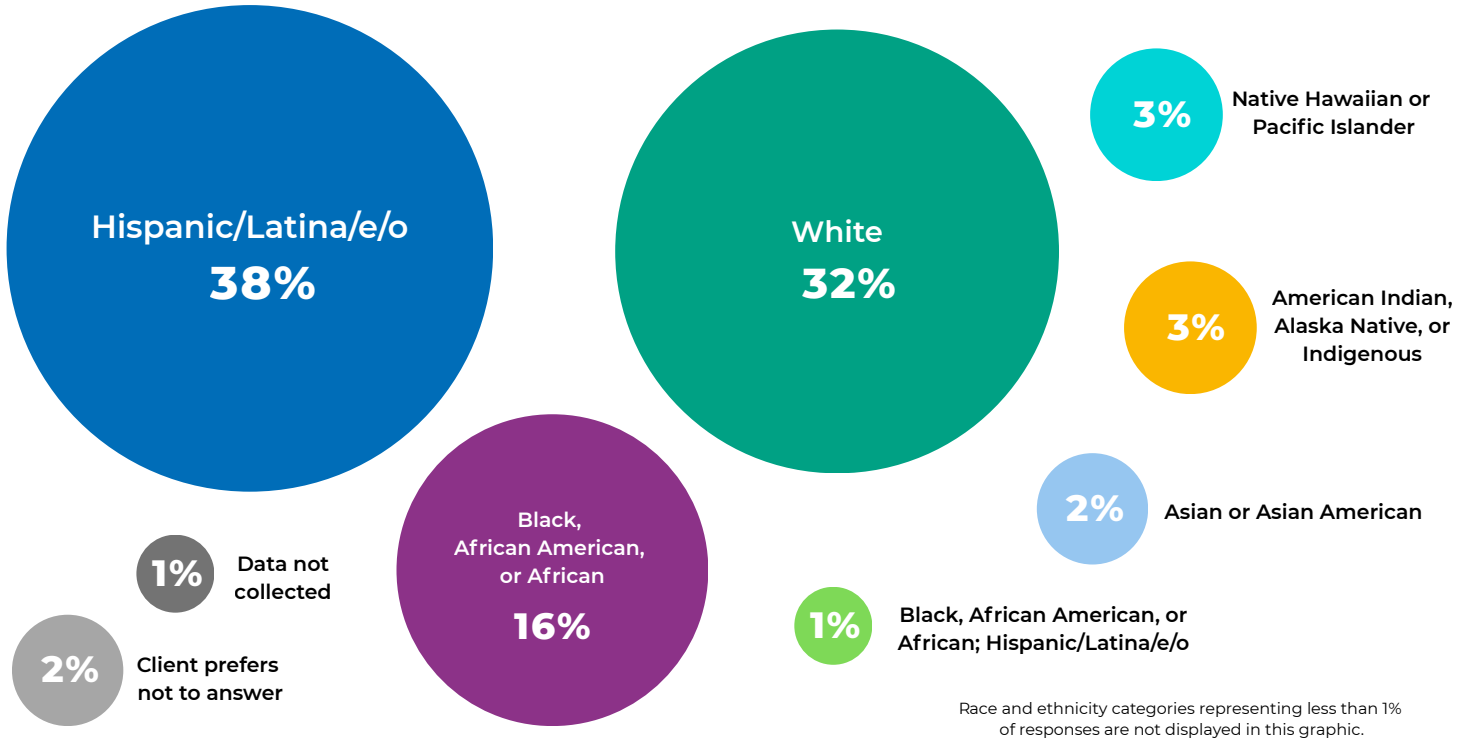
UNSHELTERED HOMELESS PROFILE OF THOSE SURVEYED



UNSHELTERED SLEEPING LOCATIONS BEFORE ARREST

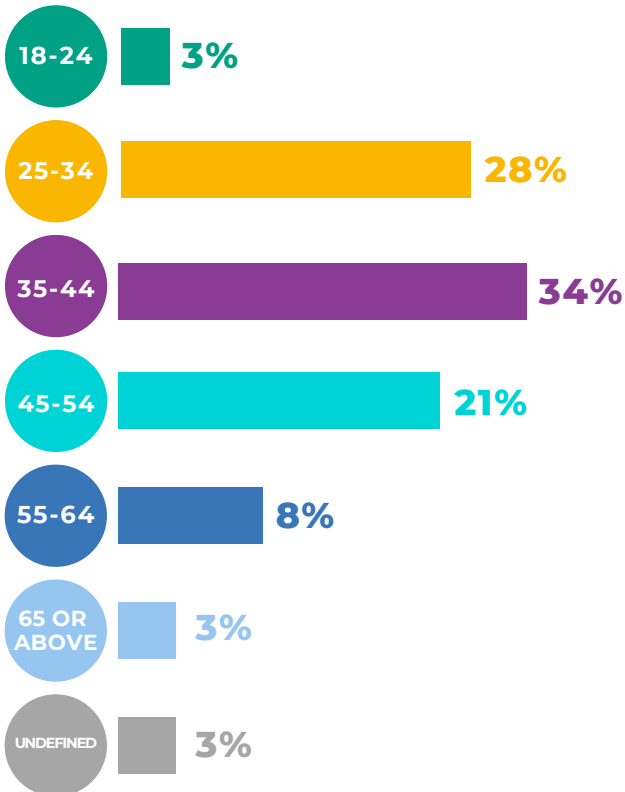


RACE AND ETHNICITY OF THOSE SURVEYED

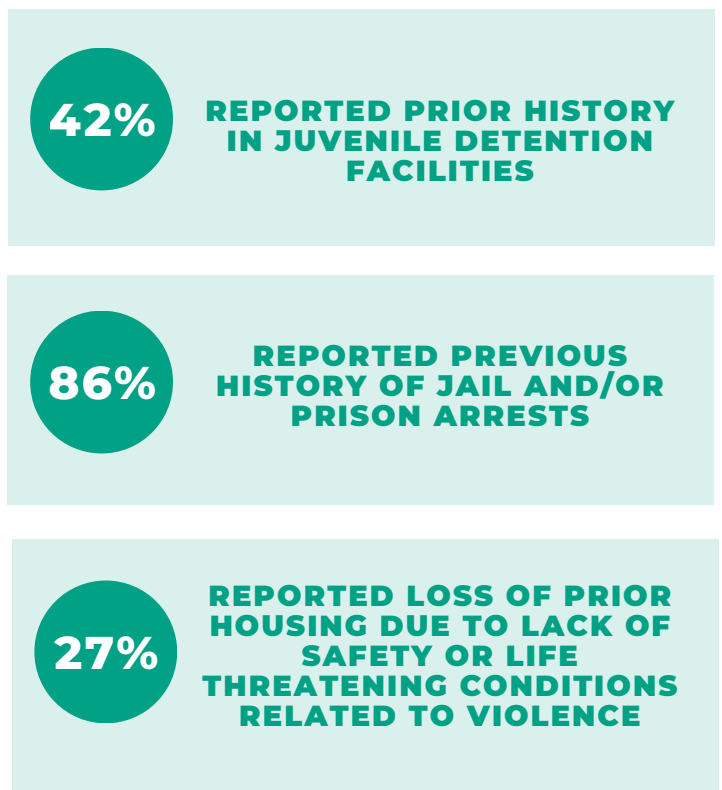


Race and ethnicity categories representing less than 1% of responses are not displayed in this graphic.

AGE RANGE OF THOSE SURVEYED



ADDITIONAL INFORMATION



UNSHELTERED PERSON DATA BEFORE ARREST

YEAR OVER YEAR CHANGE 2026 2025 % Change

Total % of persons unsheltered before arrest 42% 37% → 5%

% of persons unsheltered for the first time 40% 40% → 0%

% of persons unsheltered in vehicles 18% 20% → -2%

% of unsheltered persons with previous juvenile detention history 42% 41% → 1%

% of unsheltered persons with previous jail or prison history 86% 84% → 2%

% of unsheltered persons who lost housing due to safety concerns or violence 27% 24% → 3%