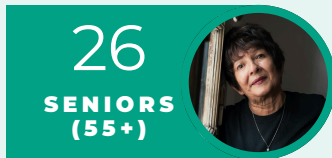


ONCE EACH YEAR, HUNDREDS OF VOLUNTEERS SPAN THE COUNTY TO LOCATE AND COUNT OUR NEIGHBORS LIVING WITHOUT PERMANENT SHELTER. THIS DATA IS A CRUCIAL COMPONENT TO OUR ABILITY TO REDUCE AND END HOMELESSNESS IN SAN DIEGO.



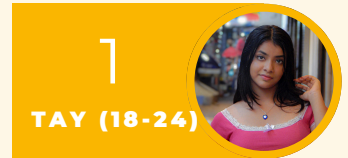
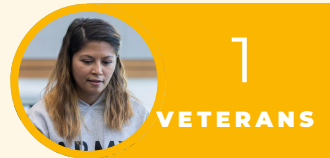
**107** TOTAL  
COUNT

**64**  
TOTAL UNSHELTERED



**23%** CHRONIC HOMELESS

**43**  
TOTAL SHELTERED



**55.81%** CHRONIC HOMELESS

**UNSHELTERED % CHANGE**

	2026 TOTAL	2025 TOTAL	% CHANGE
Encinitas	64	91	-29.7%

**SHELTER BY TYPE**

	ES	TH	SH	2026 TOTAL	2025 TOTAL	% CHANGE
Encinitas	35	8	0	43	44	-2.27%

**SHELTER HOUSING INVENTORY COUNT (HIC) BEDS & UTILIZATION BY TYPE**

NUMBER OF BEDS	UTILIZATION	NUMBER OF BEDS	UTILIZATION	NUMBER OF BEDS	UTILIZATION
ES 39	90%	RRH 66	100%	TH 8	100%

REGIONAL YEAR OVER YEAR CHANGE	2026	2025		% Change
<b>TOTAL COUNT</b>	9,803	9,905	→	<b>-1%</b>
<b>TOTAL UNSHELTERED</b>	5,108	5,714	→	<b>-11%</b>
<b>TOTAL SHELTERED</b>	4,695	4,191	→	<b>12%</b>

## San Diego County

Unsheltered and Sheltered Combined Totals by Region

