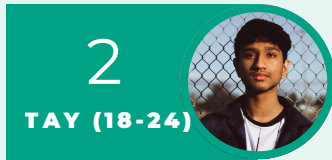


ONCE EACH YEAR, HUNDREDS OF VOLUNTEERS SPAN THE COUNTY TO LOCATE AND COUNT OUR NEIGHBORS LIVING WITHOUT PERMANENT SHELTER. THIS DATA IS A CRUCIAL COMPONENT TO OUR ABILITY TO REDUCE AND END HOMELESSNESS IN SAN DIEGO.



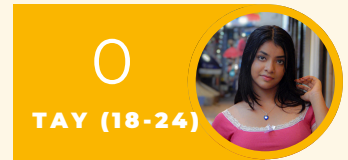
7 TOTAL
COUNT

7
TOTAL UNSHELTERED



29% CHRONIC HOMELESS

0
TOTAL SHELTERED



0% CHRONIC HOMELESS

UNSHELTERED % CHANGE

	2026 TOTAL	2025 TOTAL	% CHANGE
San Marcos	7	30	-76.7%

SHELTER BY TYPE

	ES	TH	SH	2026 TOTAL	2025 TOTAL	% CHANGE
San Marcos	0	0	0	0	0	0.00%

SHELTER HOUSING INVENTORY COUNT (HIC) BEDS & UTILIZATION BY TYPE

NUMBER OF BEDS UTILIZATION



NUMBER OF BEDS UTILIZATION



REGIONAL YEAR OVER YEAR CHANGE	2026	2025		% Change
TOTAL COUNT	9,803	9,905	→	-1%
TOTAL UNSHELTERED	5,108	5,714	→	-11%
TOTAL SHELTERED	4,695	4,191	→	12%

San Diego County

Unsheltered and Sheltered Combined Totals by Region

