

TO GAIN A BETTER UNDERSTANDING OF YOUTH HOMELESSNESS IN OUR COMMUNITY, A YOUTH COUNT IS CONDUCTED EACH YEAR IN COLLABORATION WITH LOCAL YOUTH SERVICE PROVIDERS. EACH YEAR, VOLUNTEERS ASSIST RTFH WITH COLLECTING DATA ON **TRANSITIONAL AGED YOUTH (TAY)** BETWEEN THE AGES OF 18-24 WHO WERE EXPERIENCING HOMELESSNESS ON THE NIGHT OF THE COUNT OR WHO SELF-REPORTED AS BEING UNSTABLY HOUSED. UNSTABLE HOUSING SITUATIONS INCLUDE COUCH SURFING, LOSS OF HOUSING WITHIN 14 DAYS, OR HOTEL/MOTEL STAY (SELF-PAID). DATA WAS COLLECTED OVER A 1-WEEK PERIOD BEGINNING ON JANUARY 29, 2026. DATA FROM THE POINT-IN-TIME COUNT AND HMIS SHELTER DATA HELPED INFORM THIS REPORT.



**655 (TAY)**  
**TOTAL COUNT**

**222(TAY)**  
**TOTAL UNSHELTERED**

**433(TAY)**  
**TOTAL SHELTERED**

**77\*(TAY)**  
**TOTAL UNSTABLY HOUSED**

\*Not included in the total count

**UNSHELTERED HOMELESS PROFILE**



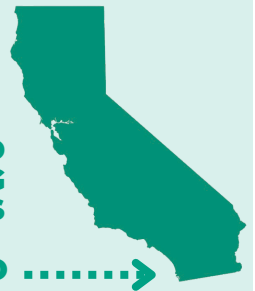
**3%**  
**VETERANS**

**15%**

**REPORTED CHRONICALLY HOMELESS**

**67%**

**REPORTED BECOMING HOMELESS IN SAN DIEGO**



**0%**  
**PARENTING YOUTH HOUSEHOLDS**

**38%**

**REPORTED FIRST TIME HOMELESS**

**YEAR OVER YEAR CHANGE**

**2026**

**2025**

**% Change**

**TOTAL COUNT**

655

682



**-4%**

**TOTAL UNSHELTERED**

222

302



**-26%**

**TOTAL SHELTERED**

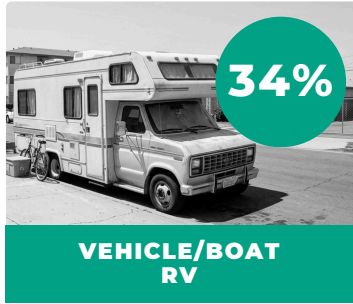
433

380



**14%**

**UNSHELTERED LIVING SITUATION**  
ON THE NIGHT OF THE COUNT



**LENGTH OF TIME HOMELESS**

FOR UNSHELTERED TRANSITIONAL AGED YOUTH (TAY) WHO COMPLETED A COUNT SURVEY, 14% OF YOUTH REPORTED THAT THEIR CURRENT HOMELESS EPISODE HAS LASTED FOR 3 YEARS OR MORE.

**26%**

**36 MONTHS OR MORE**

**FLEEING DOMESTIC VIOLENCE**

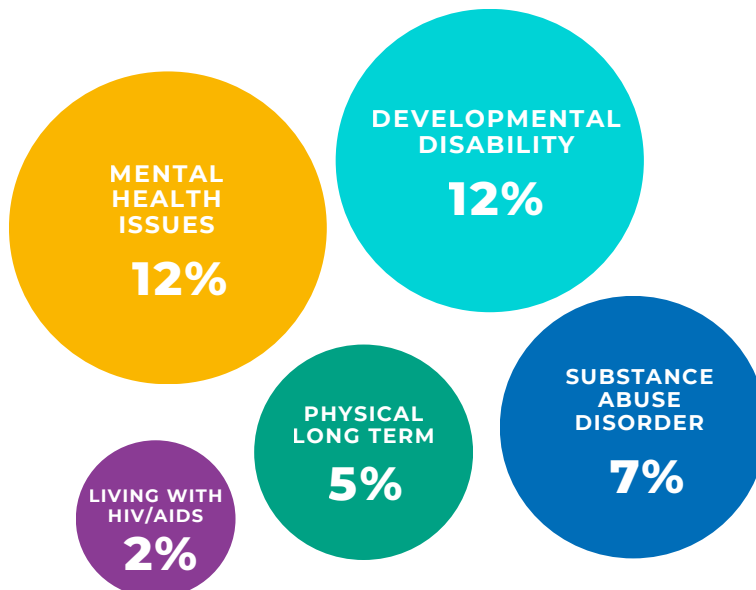
FOR UNSHELTERED TRANSITIONAL AGED YOUTH (TAY) WHO COMPLETED A COUNT SURVEY,

**19%**

REPORTED THEY WERE CURRENTLY FLEEING DOMESTIC VIOLENCE ON THE NIGHT OF THE COUNT.

**DISABLING CONDITIONS**

FOR UNSHELTERED TRANSITIONAL AGED YOUTH (TAY) WHO COMPLETED A COUNT SURVEY, THE FOLLOWING DISABLING CONDITIONS WERE SELF-REPORTED ON THE NIGHT OF THE COUNT.



**10%**

**24 TO 35 MONTHS**

**19%**

**12 TO 23 MONTHS**

**44%**

**UNDER 1 YEAR**

## YOUTH COUNT CUSTOM SURVEY QUESTIONS

### Are you currently accessing any of the following services in the community?

	UNSHELTERED (TAY)	UNSTABLE (TAY)
Drop-in/Day shelter	33%	40%
Emergency shelter	7%	14%
Bus passes	17%	22%
Transitional housing	7%	12%
Mental health	14%	14%
Employment	14%	16%
Free meals	38%	22%
Legal services	2%	4%
Immigration services	0%	4%
Health services	5%	6%
Alcohol/drug counseling	0%	0%
Not using services	10%	1%
Other	0%	0%
Prefers not to answer	7%	16%

### What services would assist you in securing more stable housing?

	UNSHELTERED (TAY)	UNSTABLE (TAY)
Rental subsidy	67%	45%
More affordable housing options	62%	65%
More roommate options	38%	35%
More single room options	36%	30%
Legal assistance	26%	22%
Deposit money	26%	27%
Utility costs	24%	23%
Employment services	24%	23%
Family reunification support help	2%	8%
Other*	7%	1%

### What is the primary cause of your homelessness?

	UNSHELTERED (TAY)	UNSTABLE (TAY)
Loss of job	5%	4%
Money issues	17%	22%
Loss of family members (s)	5%	4%
Disability	0%	0%
Abuse/violence	10%	6%
Kicked out/ran away	19%	10%
Aged out of Foster Care	0%	0%
Time in jail/prison	0%	1%
Divorce	0%	0%
Other*	2%	9%
Don't know	2%	0%
Prefers not to say	17%	23%

## UNSTABLY HOUSED YOUTH

**77** TRANSITIONAL AGED YOUTH (TAY) WHO COMPLETED A YOUTH SURVEY REPORTED COMING FROM THE FOLLOWING UNSTABLY HOUSED LIVING SITUATIONS. FOR HUD POINT-IN-TIME COUNT PURPOSES, THESE NUMBERS CANNOT BE REPORTED TO HUD AS PART OF OUR UNSHELTERED AND SHELTERED NUMBERS, AS THEY ARE NOT CONSIDERED LITERALLY HOMELESS BY HUD.

**0%**

IN A PLACE WHERE THEY WERE BEING EVICTED WITHIN THE NEXT TWO WEEKS

**97%**

COUCH HOPPING/SURFING

**3%**

STAYING IN A MOTEL/HOTEL (PAID WITH THEIR FUNDS)

\* Question #2 (Unsheltered): "Mental health resources & cool beds, bus passes, and communication."

\* Question #3 (Unsheltered): "Hanging out with the wrong people"

\* Question #2 (Unstably Housed): "Credit card debt and bills"

\* Question #3 (Unstably Housed): "Loss of housing, kicked out, no jobs in the area, lack of support from social services"