



Regional Community Action Plan to Prevent and End Homelessness in San Diego

This Regional Community Action Plan to Prevent and End Homelessness in San Diego (Regional Plan) sets forth a shared vision and foundation for ending homelessness throughout the San Diego region over the next five years. The Regional Plan identifies system and resource gaps, promotes evidence-based approaches for the homelessness crisis response system including person-centered orientations like Housing First, Trauma Informed Care, and progressive engagement, places a focus on equity, and embraces the truth that ENDING HOMELESSNESS begins with a HOME, and EVERYONE can thrive in HOUSING with appropriate SUPPORT.

The Regional Plan adopts the shared vision of an END to HOMELESSNESS across San Diego County through a housing-focused, equity driven, and person-centered system of care.

Ending homelessness does not mean there will never be another person who will face a housing crisis in San Diego again. Rather, it means San Diego will have a robust coordinated system in place to prevent housing loss when possible, and when not prevented, to respond with urgency, eagerness, and compassion, to engage people in a meaningful way, connect them to permanent housing as quickly as possible, and provide stabilizing community supports.

SYSTEM CHALLENGES, RESOURCE GAPS, AND NEEDED SHIFTS

While the system is stronger and are more resources and commitment to to address homelessness than ever before, critical gaps and challenges remain in San Diego.

CRITICAL SYSTEM CHALLENGES

1. **Fragmented Leadership, Vision, and Lack of Regional Coordination and Funding Alignment**
2. **Significant Disparities Exist**
3. **Authentically Incorporating the Voices of People with Lived Experience**
4. **Homeless System Infrastructure Refinement — Expand Use of Coordinated Entry and Use of Data to Drive Decisions**
5. **Significant Shortage of Housing that is Affordable and Willingness to Address**
6. **Responding to Unsheltered Homelessness**
7. **Lack of Available Low-Barrier Shelter Options**
8. **Need for More Health and Behavioral Health Services and Partnerships**
9. **Need for More Focus on Preventing Homelessness and Targeting Resources**
10. **Trained and Sustainable Workforce**

| INTERVENTION TYPE | CITY OF SAN DIEGO | EAST COUNTY | NORTH COUNTY | SOUTH COUNTY | TOTAL |
|------------------------------|-------------------|-------------|--------------|--------------|-----------|
| Diversion | 3,131 | 316 | 659 | 365 | 4,470 |
| Emergency Shelter | 430-600 | 150-230 | 150-230 | 150-230 | 850-1,290 |
| Low-Income Housing | 3,132 | 797 | 798 | 319 | 5,046 |
| Rapid Re-Housing | 7,309 | 1,858 | 1,863 | 743 | 11,774 |
| Permanent Supportive Housing | 2,676 | 658 | 718 | 294 | 4,347 |

REGIONAL AND SUB-REGIONAL HOMELESS RESOURCES GAPS AND NEEDS

Across the region there are not enough homeless intervention resources to meet the need. There are not enough shelter beds to support people to exit the streets quickly with most shelters having lengthy waiting lists. More importantly, there are not enough permanent housing resources in the form of diversion assistance, rapid re-housing, permanent supportive housing, and affordable housing.

CRISIS RESPONSE SYSTEM ORIENTATION AND NEEDED SHIFTS

It is critical for San Diego to bring on the needed interventions identified above, but it is equally important for the region to continue making shifts to a best practice-oriented system to ensure that the resources realized have impact.

- **Commitment to Housing First**
- **Regional Planning and Working Collaboratively**
- **Broad Use of the Coordinated Entry System and Coordinated Shelter Intake**
- **Actively Addressing Disparities**
- **Improved System Performance**
- **Data-driven Decision Making**

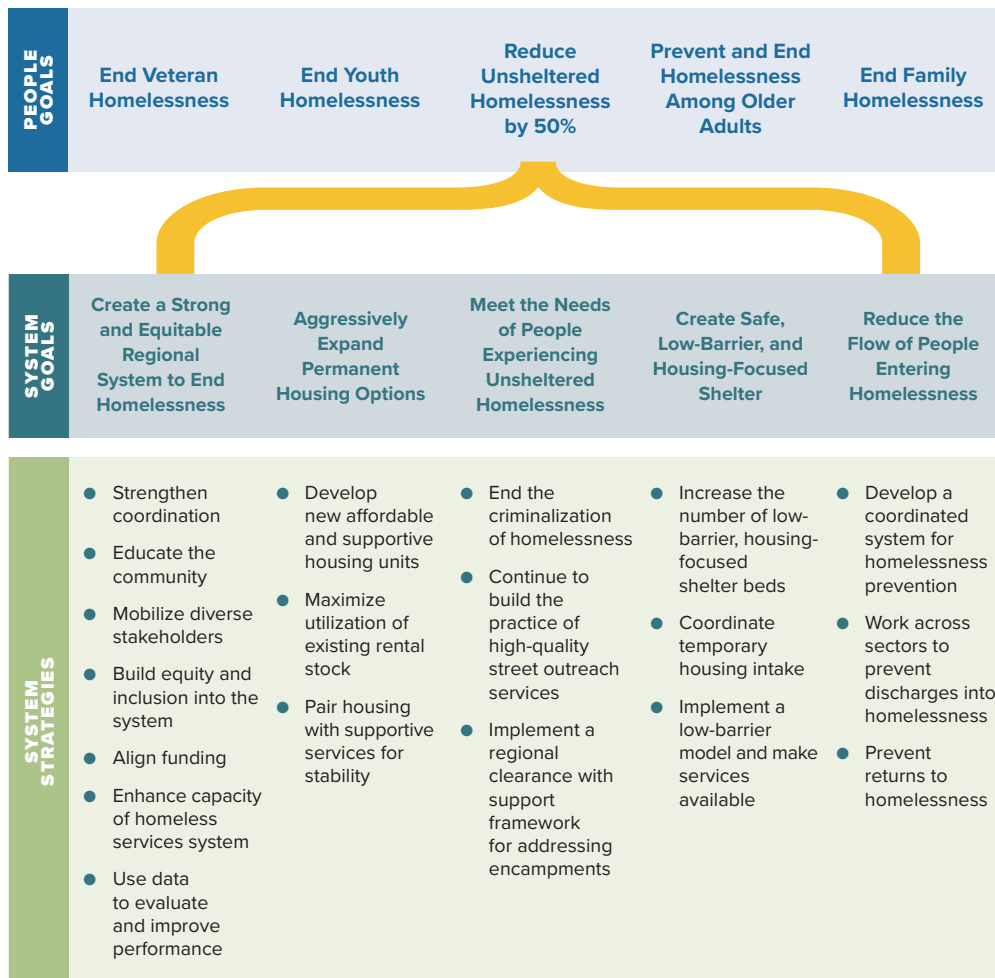
CORE SYSTEM PRINCIPLES EXPECTED OF ALL STAKEHOLDERS IN SAN DIEGO

To achieve the vision outlined in this plan, the region commits to a set of principles that both defines our culture of working in collaboration and directs how we will work to prevent and end homelessness in San Diego moving forward.

- **Act with Urgency, Compassion, and Eagerness**
- **Unified and Committed Leadership**
- **Commit to Housing as the Solution**
- **Center Racial Equity and Social Justice**
- **Include and Value the Voices of People with Lived Experience**
- **Share Accountability, Responsibility, and Transparency**
- **Promote a Person-Centered Homelessness Response System**
- **Value the Critical Role of Homeless Services Providers**
- **Data Must Drive Decision Making**
- **Collaboratively Seek and Align Funding to Achieve Goals**

REGIONAL GOALS AND STRATEGIES OVER THE NEXT FIVE YEARS

The Regional Plan outlines system changes needed to achieve better outcomes for people and end homelessness across San Diego County. The following goals and strategies will guide priorities, funding, and action. All goals are aligned with and embedded in existing federal, state, or local plans.



IMPLEMENTING THE PLAN

Implementation of this plan is a regional responsibility. The key bodies identified below will have both authority and specific ownership of plan goals and strategies..

- **CoC Advisory Board**
- **CoC Committees**
- **Regional Task Force on Homelessness**
- **Government Agencies – Cities and County**
- **Homeless Services Providers and CoC Membership including Persons with Lived Experience**

SHARED MEASURES

Performance will be measured using both quantitative and qualitative data. The CoC will review performance regularly and make needed adjustments to continue to move the plan forward.

- **Increase the Performance of the Homeless Crisis Response System as Measured by HUD System Performance Measures**
- **Reduce Racial Disparities**
- **Increase Temporary and Permanent Housing Resources**
- **Know Every Person by Name and Reach “Functional Zero”**
- **Ensure the System Meets the Needs of Persons Receiving Services**



SAN DIEGO
Regional Task Force
on Homelessness

The RTFH is responsible for collecting, tracking, and reporting out on a significant amount of data as it pertains to homelessness in our region.

Scan this QR Code to download the full report including Part 4: Appendix. Or visit:

rtfhdsd.org

